

SAFETY AND SCHOOL ENVIRONMENT

Non-CSAP Course Offerings

Your School Offers	does	does not
• art.....	<input checked="" type="checkbox"/>	<input type="checkbox"/>
• drama or theater.....	<input type="checkbox"/>	<input checked="" type="checkbox"/>
• music.....	<input checked="" type="checkbox"/>	<input type="checkbox"/>
• physical education.....	<input checked="" type="checkbox"/>	<input type="checkbox"/>
• opportunity for civic or community engagement.....	<input type="checkbox"/>	<input checked="" type="checkbox"/>
• internet safety program.....	<input checked="" type="checkbox"/>	<input type="checkbox"/>
• International Baccalaureate.....	<input type="checkbox"/>	<input checked="" type="checkbox"/>
• extracurricular activities.....	<input type="checkbox"/>	<input checked="" type="checkbox"/>
• athletics.....	<input type="checkbox"/>	<input checked="" type="checkbox"/>
• preschool program.....	<input type="checkbox"/>	<input checked="" type="checkbox"/>
• full-day kindergarten program.....	<input type="checkbox"/>	<input checked="" type="checkbox"/>
• before-and-after-school care program.....	<input type="checkbox"/>	<input checked="" type="checkbox"/>

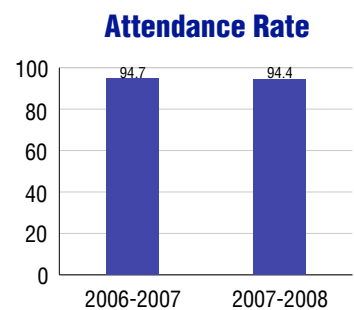
Safety and Discipline

Safe schools are a top priority for parents, teachers, and communities. Your school safety and discipline record for the 2007-2008 school year is:

Type of Incident	Number of Incidents Reported	Percent of Total Incidents
Substance Abuse - Drugs		
Substance Abuse - Alcohol		
Substance Abuse - Tobacco		
Felony Assaults		
Fights		
Possession of Dangerous Weapons		
Other Violations Code of Conduct	4	100.0%

Student Attendance and School Calendar

2007-2008	Your School
Enrollment	326
Average Daily Attendance	308
Student Dropouts	N/A



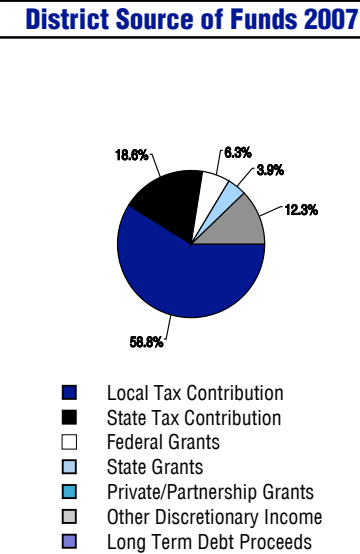
Student Information Over Time

	2005-2006	2006-2007	2007-2008
Student Enrollment Stability	93.8%	95.2%	95.1%
Students Eligible for Free and Reduced Lunch	36.8 %	35.7 %	37.1 %

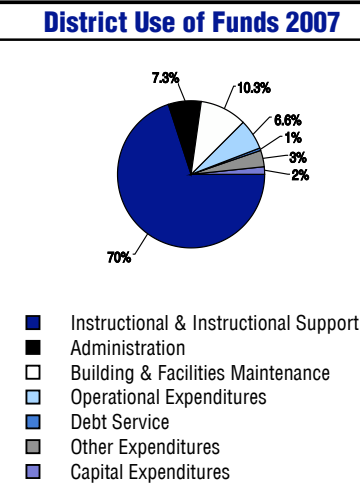
For more information and further details about this report, visit www.state.co.us/schools
 Colorado Department of Education, 201 East Colfax Ave. Denver, CO 80203
East Elementary School
 2020/2374/E
 600 Texas Avenue . Craig, CO 81625 . 970-824-6042
 10/20/2008

DISTRICT TAXPAYER'S REPORT

Sources of School District Revenue	2007
Local Tax Contribution	\$11,952,220
State Tax Contribution	3,775,773
Federal Grants	1,274,329
State Grants	801,332
Private/Partnership Grants	0
Other Discretionary Income	2,506,082
Total District Operating Revenue	\$20,309,736
Long Term Debt Proceeds	0
Total District Revenue	\$20,309,736
Total District Operating Revenue Per Pupil =	\$9,184
Total District Revenue Per Pupil (Including Long Term Debt) =	\$9,184
District Per Pupil Operating Revenue =	\$5,591
State Average Per Pupil Operating Revenue =	\$6,080



District Use of Funds	2007
Instructional & Instructional Support	\$14,277,029
Administration	1,479,876
Building & Facilities Maintenance	2,088,354
Operational Expenditures	1,342,350
Debt Service	132,473
Other Expenditures	687,467
Total District Operating Expenditures	\$20,007,549
Capital Expenditures	365,462
Total District Use of Funds	\$20,373,011



District Debt and Capital Construction & Equipment

Total Outstanding Bonded Debt	\$0
Average Annual Percentage Interest Rate on Debt	0%
Amount Raised from Most Recent Bond	\$0
Amount Spent on New Buildings During Last 2 Years	\$0

Accreditation

Accreditation is Colorado's primary accountability system, incorporating achievement levels, academic growth, achievement gaps, post-secondary readiness, improvement planning, and compliance. The state accredits districts and districts accredit individual schools.

District Accreditation Status for the 2007-2008 school year:

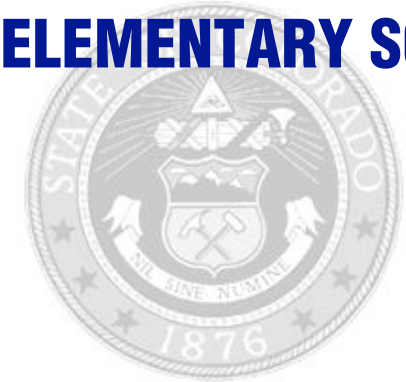
Voter Approved Funding Changes

Your community did /did not hold an election in November 2006

The following items have been approved by voters:

- TABOR Override
- Bond
- Mill Levy Increase

EAST ELEMENTARY SCHOOL



MOFFAT COUNTY RE:NO 1

<http://www.moffatsd.org/>

School Accountability Report 2007-2008 School Year

School Performance Summary

Overall Academic Performance on State Assessments **Average**

Academic Growth of Students **Typical**

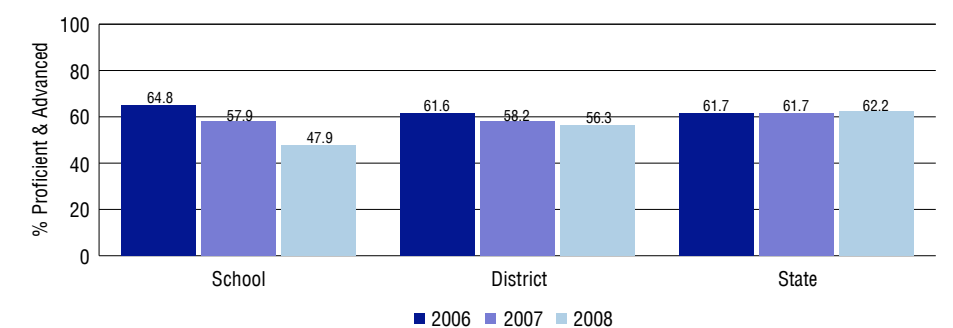
Overall Academic Performance on State Assessments

Each school in the State received a rating of "Excellent", "High", "Average", "Low", or "Unsatisfactory" for student academic performance based on 2007-2008 CSAP and COACT results. The rating is calculated using weighted percentages of each CSAP proficiency level for all content area and grade results for the school, as well as average COACT Reading, Writing, and Math Grade 11 results.

Academic Growth of Students

Each school in the State received a rating of "Low", "Typical", or "High" for student academic growth based on CSAP results. The calculation method is new for 2007-2008. The rating is calculated using student percentile scores matched over two years. More information about the Overall Academic Performance rating and Academic Growth of Students calculations can be found here: http://www.cde.state.co.us/cdeassess/SAR_Info.html.

Percent Proficient and Advanced for Elementary Grades for All Content Areas



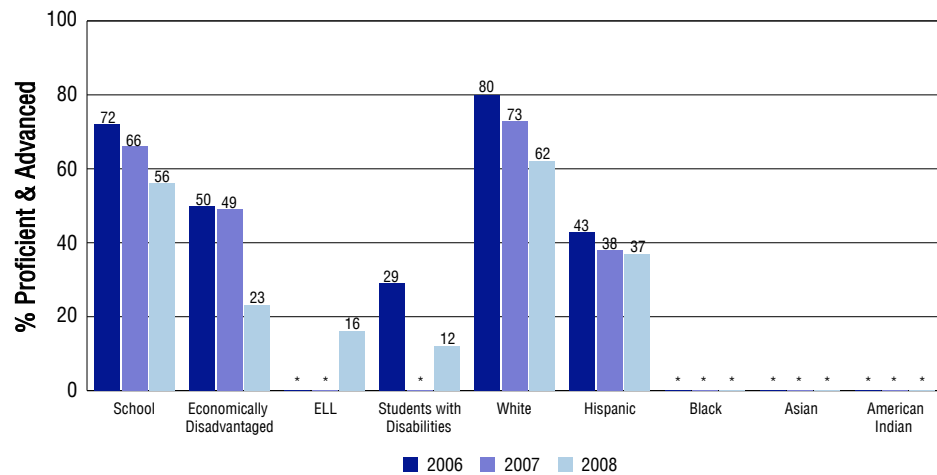
Student Test Scores Used For Calculating Overall Academic Performance

82.7%	Test Scores Counted
9.3%	Test Scores not used due to Language
7.9%	Test Scores not used due to New Student

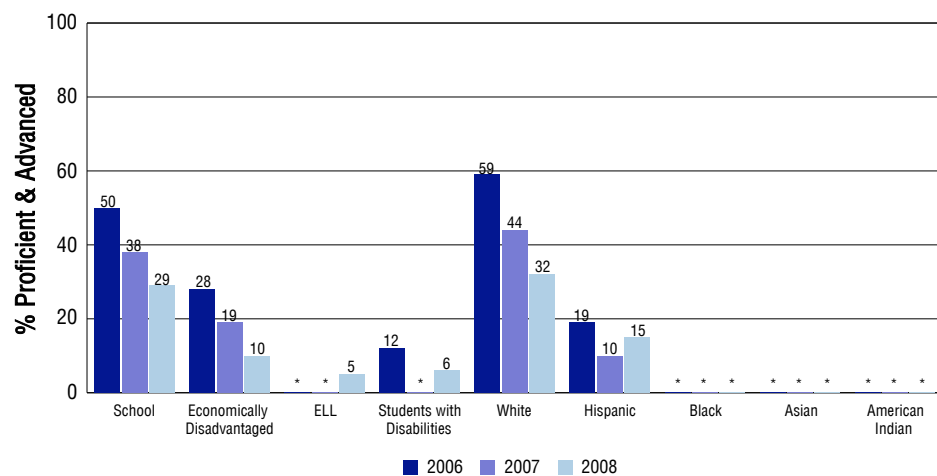
STUDENT PERFORMANCE

These graphs show the percent Proficient and Advanced trends over the past three years for Reading, Writing, and Math. Results are presented for the entire school for all reported grades as well as for different subgroups. Note: * indicates any group with less than 16 student results to be reported.

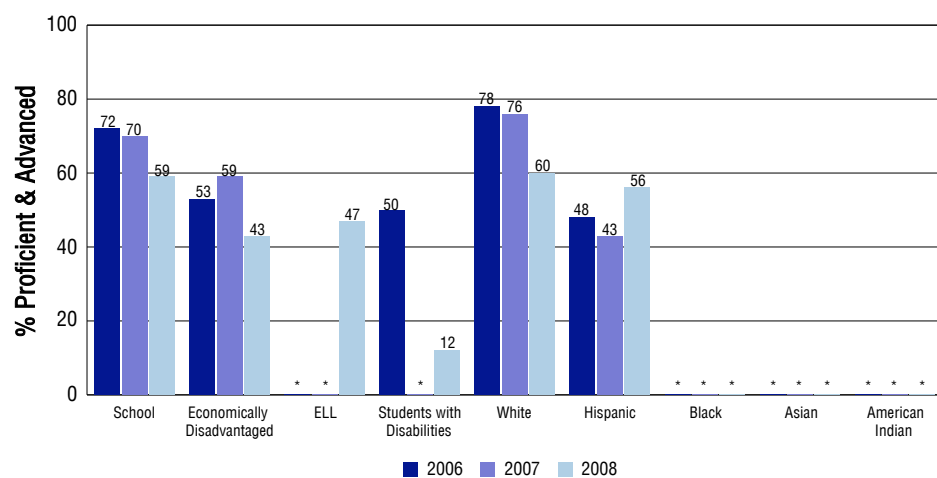
Reading



Writing



Math



SCHOOL INFORMATION

School Pride (as submitted by your district)

- Grade level teams collaborate on a regular basis to analyze student progress and plan for differentiated lessons.
- Parent and community support through our annual fundraiser has allowed us to purchase SmartBoards for every classroom.
- Response to Intervention Model has led to more timely identification of students struggling academically or behaviorally.
- Our Kindergarten intervention program (LEAP) provides additional educational experiences for our at risk population.

School Goals (as submitted by your district)

We use the RTI process, the Pyramid of Interventions Cards (accessible on the school server), and Data Analysis when writing team and individual, short term School Improvement Goals. Literacy and Math Achievement data are analyzed; prevention and intervention strategies are developed to guide instruction that increases student achievement. Teams administer, score, and analyze Common Assessments (CAs) and additional specific student data to determine student learning successes and areas for growth. Then they develop and implement "green intervention" lessons for targeted students who did not score in the proficient range on the essential learnings for each trimester.

No Child Left Behind - Adequate Yearly Progress

Did your school make AYP in reading? Yes Math? Yes
 How many targets does your school have? 14 Met? 14

Based on this school's academic performance, your child may be eligible for one or more of the following; ask your school if your child qualifies for:

Extra academic instruction either before or after-school, or in the summer
 Mentoring

For additional information regarding Adequate Yearly Progress please visit
<http://www.cde.state.co.us/FedPrograms/ayp/index.asp>

How East Elementary School Compares To Elementary Schools Within A 75-Mile Radius

School	Program Type	Academic Performance	Academic Growth
Craig Intermediate School		Average	Typical
Sunset Elementary School		Average	Typical
Ridgeview Elementary School		Average	Low
Hayden Valley Elementary School(1)		High	Typical
Maybell Elementary School		Average	No Rating
North Routt Charter School(2)	Charter	Average	No Rating
Soda Creek Elementary School(2)		High	Typical
Strawberry Park Elementary School(2)		Excellent	Typical
Meeker Elementary School(3)		High	Typical
South Routt Elementary School(4)		Average	Low

- 1 Located in Hayden RE-1 School District.
 2 Located in Steamboat Springs RE-2 School District.
 3 Located in Meeker Re1 School District.
 4 Located in South Routt RE 3 School District.

ABOUT OUR STAFF

School Employment

Each year, your district reports to the Colorado Department of Education on the number of adults who work in your school, as well as the type of work they do. Last year, your school employed:

	Your School		District	
	Full Time	Part Time	Full Time	Part Time
Teachers	18	3	137	12
Paraprofessionals	13	1	69	21
Administrators	1	0	16	3
Other Professionals	0	0	11	7
School Support	3	4	42	46
School Counselors	1	0	8	1
School Librarians	0	0	2	0
Total Staff	44		363	

Students per Teacher Ratio

	Student Enrollment	Students per Teacher
Grade 1	71	14.6
Grade 2	62	16.1
Grade 3	60	15.6
Grade 4	60	15.6

Professional Experience of Teachers

	Your School	District
Average years of teaching experience	8	13
Percent of teachers teaching in the subject in which they received their degree	N/A	N/A
Number of teachers with Masters or Doctoral degrees	7	77
Teachers with 3 years or more of teaching experience	14	119
Teachers with less than 3 years of teaching experience	7	30
Number of professional development days	3	3

Salaries

	Your School	District	State
Average Teacher Salary	\$41,855	\$46,337	\$47,494
Average Administrator Salary	\$71,740	\$67,087	\$80,444

Principal: Diana Cook

Number of years as Principal at this school: 6

Number of years as Principal at any school: 6