

# SAFETY AND SCHOOL ENVIRONMENT

## Non-CSAP Course Offerings

Your School Offers	does	does not
• art.....	<input checked="" type="checkbox"/>	<input type="checkbox"/>
• drama or theater.....	<input checked="" type="checkbox"/>	<input type="checkbox"/>
• music.....	<input checked="" type="checkbox"/>	<input type="checkbox"/>
• physical education.....	<input checked="" type="checkbox"/>	<input type="checkbox"/>
• opportunity for civic or community engagement.....	<input checked="" type="checkbox"/>	<input type="checkbox"/>
• internet safety program.....	<input checked="" type="checkbox"/>	<input type="checkbox"/>
• International Baccalaureate.....	<input type="checkbox"/>	<input checked="" type="checkbox"/>
• extracurricular activities.....	<input checked="" type="checkbox"/>	<input type="checkbox"/>
• athletics.....	<input checked="" type="checkbox"/>	<input type="checkbox"/>
• career and technical education.....	<input type="checkbox"/>	<input checked="" type="checkbox"/>
• honors.....	<input type="checkbox"/>	<input checked="" type="checkbox"/>

## Safety and Discipline

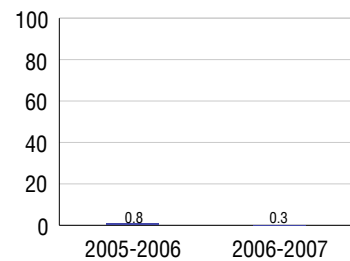
Safe schools are a top priority for parents, teachers, and communities. Your school safety and discipline record for the 2007-2008 school year is:

Type of Incident	Number of Incidents Reported	Percent of Total Incidents
Substance Abuse - Drugs	2	2.9%
Substance Abuse - Alcohol	5	7.4%
Substance Abuse - Tobacco	17	25.0%
Felony Assaults		
Fights	6	8.8%
Possession of Dangerous Weapons	1	1.5%
Other Violations Code of Conduct	37	54.4%

## Student Attendance and School Calendar

2007-2008	Your School
Enrollment	346
Average Daily Attendance	323
Student Dropouts	0.3%

## Dropout Rate



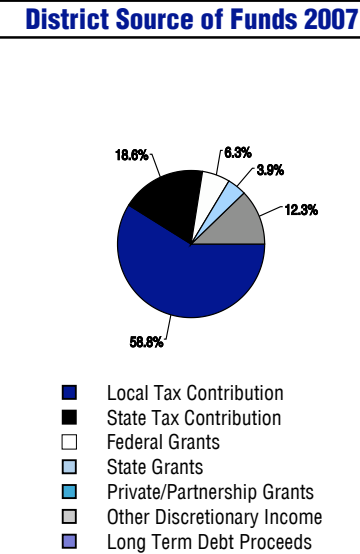
## Student Information Over Time

	2005-2006	2006-2007	2007-2008
Student Enrollment Stability	97%	97.0%	96.2%
Students Eligible for Free and Reduced Lunch	26.2 %	30.5 %	28.0 %

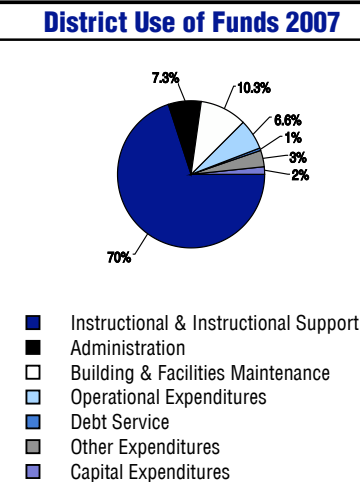
For more information and further details about this report, visit [www.state.co.us/schools](http://www.state.co.us/schools)  
 Colorado Department of Education, 201 East Colfax Ave. Denver, CO 80203  
**Craig Middle School School**  
 2020/1938/M  
 915 Yampa Avenue . Craig, CO 81625 . 970-824-3289  
 10/20/2008

# DISTRICT TAXPAYER'S REPORT

Sources of School District Revenue	2007
Local Tax Contribution	\$11,952,220
State Tax Contribution	3,775,773
Federal Grants	1,274,329
State Grants	801,332
Private/Partnership Grants	0
Other Discretionary Income	2,506,082
<b>Total District Operating Revenue</b>	<b>\$20,309,736</b>
Long Term Debt Proceeds	0
<b>Total District Revenue</b>	<b>\$20,309,736</b>
<b>Total District Operating Revenue Per Pupil =</b>	<b>\$9,184</b>
<b>Total District Revenue Per Pupil (Including Long Term Debt) =</b>	<b>\$9,184</b>
<b>District Per Pupil Operating Revenue =</b>	<b>\$5,591</b>
<b>State Average Per Pupil Operating Revenue =</b>	<b>\$6,080</b>



District Use of Funds	2007
Instructional & Instructional Support	\$14,277,029
Administration	1,479,876
Building & Facilities Maintenance	2,088,354
Operational Expenditures	1,342,350
Debt Service	132,473
Other Expenditures	687,467
<b>Total District Operating Expenditures</b>	<b>\$20,007,549</b>
Capital Expenditures	365,462
<b>Total District Use of Funds</b>	<b>\$20,373,011</b>



## District Debt and Capital Construction & Equipment

Total Outstanding Bonded Debt	\$0
Average Annual Percentage Interest Rate on Debt	0%
Amount Raised from Most Recent Bond	\$0
Amount Spent on New Buildings During Last 2 Years	\$0

## Accreditation

Accreditation is Colorado's primary accountability system, incorporating achievement levels, academic growth, achievement gaps, post-secondary readiness, improvement planning, and compliance. The state accredits districts and districts accredit individual schools.

District Accreditation Status for the 2007-2008 school year:

## Voter Approved Funding Changes

Your community did  /did not  hold an election in November 2006

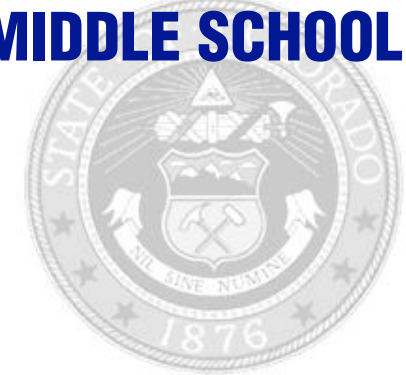
The following items have been approved by voters:

TABOR Override

Bond

Mill Levy Increase

# CRAIG MIDDLE SCHOOL SCHOOL



MOFFAT COUNTY RE:NO 1

<http://www.moffatsd.org/>

## School Accountability Report 2007-2008 School Year

### School Performance Summary

**Overall Academic Performance on State Assessments** **Average**

**Academic Growth of Students** **Low**

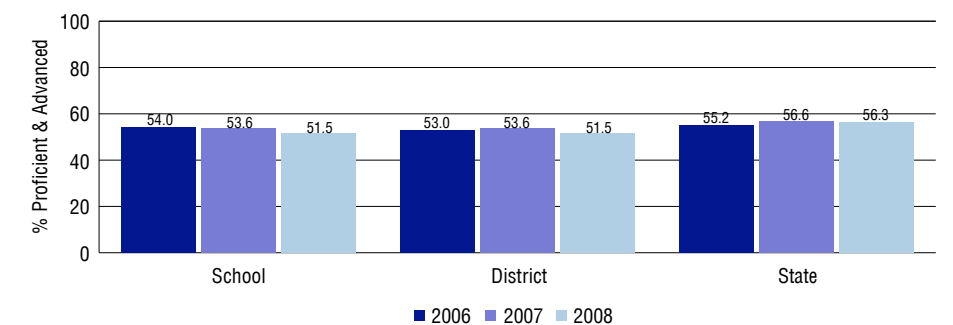
### Overall Academic Performance on State Assessments

Each school in the State received a rating of "Excellent", "High", "Average", "Low", or "Unsatisfactory" for student academic performance based on 2007-2008 CSAP and COACT results. The rating is calculated using weighted percentages of each CSAP proficiency level for all content area and grade results for the school, as well as average COACT Reading, Writing, and Math Grade 11 results.

### Academic Growth of Students

Each school in the State received a rating of "Low", "Typical", or "High" for student academic growth based on CSAP results. The calculation method is new for 2007-2008. The rating is calculated using student percentile scores matched over two years. More information about the Overall Academic Performance rating and Academic Growth of Students calculations can be found here: [http://www.cde.state.co.us/cdeassess/SAR\\_Info.html](http://www.cde.state.co.us/cdeassess/SAR_Info.html).

### Percent Proficient and Advanced for Middle Grades for All Content Areas



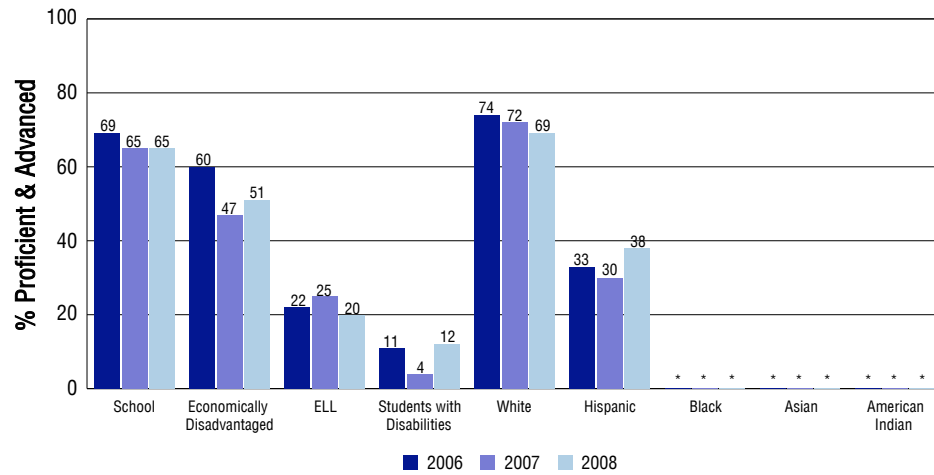
### Student Test Scores Used For Calculating Overall Academic Performance

95.4%	Test Scores Counted
1.6%	Test Scores not used due to Language
3.0%	Test Scores not used due to New Student

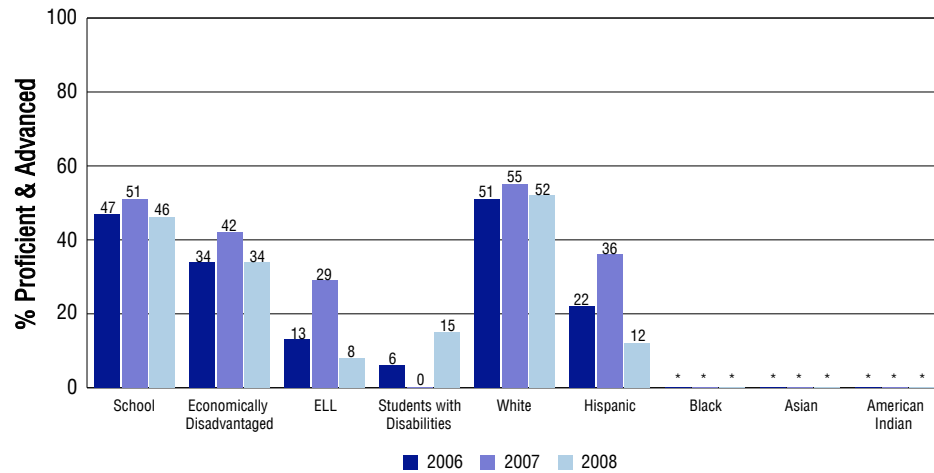
## STUDENT PERFORMANCE

These graphs show the percent Proficient and Advanced trends over the past three years for Reading, Writing, and Math. Results are presented for the entire school for all reported grades as well as for different subgroups. Note: \* indicates any group with less than 16 student results to be reported.

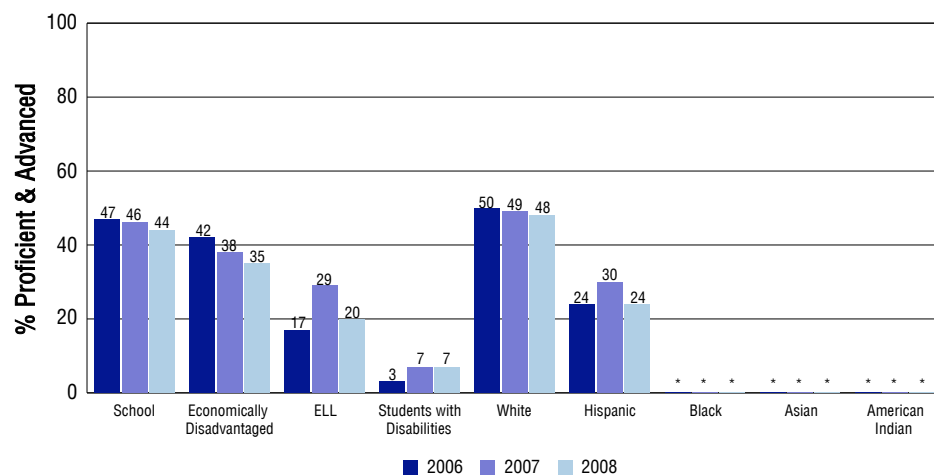
### Reading



### Writing



### Math



## SCHOOL INFORMATION

### School Pride (as submitted by your district)

- We are grateful for the community support of the recent referendum which will fund the building of new academic facilities that support 21st Century learning.
- On a recent survey, CMS students found enrichment courses designed to enhance the arts, recreation, curriculum, and life skills to be rewarding.
- Over one third of CMS students choose band or choir as an elective.
- The CMS eighth grade staff and counseling staff have partnered with the Moffat County community to provide a career day experience for all CMS eighth graders.

### School Goals (as submitted by your district)

The Craig Middle School (CMS) community will... continue to refine and implement a school wide system of interventions providing students with additional time and support when they experience difficulty in their learning. We will target students whose grades drop below average ('C'). The goal will be to decrease the number of below average grades on report cards by 10 percent from the previous year's total. demonstrate improvement in reading scores on CSAP and MAP assessments for 85 percent of CMS students who do not receive prescriptive reading interventions. Overall, students will demonstrate a 5 percent improvement in reading scores.

### No Child Left Behind - Adequate Yearly Progress

Did your school make AYP in reading? Yes Math? Yes  
 How many targets does your school have? 24 Met? 24

Based on this school's academic performance, your child may be eligible for one or more of the following; ask your school if your child qualifies for:

Extra academic instruction either before or after-school, or in the summer  
 Mentoring

For additional information regarding Adequate Yearly Progress please visit  
<http://www.cde.state.co.us/FedPrograms/ayp/index.asp>

### How Craig Middle School School Compares To Middle Schools Within A 75-Mile Radius

School	Program Type	Academic Performance	Academic Growth
Hayden Middle School(1)		Average	Typical
Soroco Middle School(2)		High	Low
North Routt Charter School(3)	Charter	High	No Rating
Barone Middle School(4)		High	Typical
Steamboat Springs Middle School(3)		Excellent	Typical
Riverside School(5)		Average	Low
Gypsum Creek Middle School(6)		High	High
Glenwood Springs Middle School(7)		High	High
Yampah Mountain School(8)	Alternative	No Rating	No Rating
North Park Junior-Senior High School(9)		High	Typical

1 Located in Hayden RE-1 School District.  
 2 Located in South Routt RE 3 School District.  
 3 Located in Steamboat Springs RE-2 School District.  
 4 Located in Meeker Re1 School District.  
 5 Located in Garfield RE-2 School District.  
 6 Located in Eagle County RE 50 School District.  
 7 Located in Roaring Fork RE-1 School District.  
 8 Located in Mountain Boces School District.  
 9 Located in North Park R-1 School District.

## ABOUT OUR STAFF

### School Employment

Each year, your district reports to the Colorado Department of Education on the number of adults who work in your school, as well as the type of work they do. Last year, your school employed:

	Your School		District	
	Full Time	Part Time	Full Time	Part Time
Teachers	23	4	137	12
Paraprofessionals	5	5	69	21
Administrators	1	0	16	3
Other Professionals	0	1	11	7
School Support	5	3	42	46
School Counselors	1	0	8	1
School Librarians	0	1	2	0
<b>Total Staff</b>	48		363	

### Students per Teacher Ratio

	Student Enrollment	Students per Teacher
Grade 7	182	14.8
Grade 8	164	13.5

### Professional Experience of Teachers

	Your School	District
Average years of teaching experience	14	13
Percent of teachers teaching in the subject in which they received their degree	48%	56%
Number of teachers with Masters or Doctoral degrees	17	77
Teachers with 3 years or more of teaching experience	22	119
Teachers with less than 3 years of teaching experience	5	30
Number of professional development days	3	3

### Salaries

	Your School	District	State
Average Teacher Salary	\$47,252	\$46,337	\$47,494
Average Administrator Salary	\$74,486	\$67,087	\$80,444

Principal: William Toovey

Number of years as Principal at this school: 3

Number of years as Principal at any school: 3