

SAFETY AND SCHOOL ENVIRONMENT

Non-CSAP Course Offerings

Your School Offers	does	does not
• art.....	<input checked="" type="checkbox"/>	<input type="checkbox"/>
• drama or theater.....	<input type="checkbox"/>	<input checked="" type="checkbox"/>
• music.....	<input checked="" type="checkbox"/>	<input type="checkbox"/>
• physical education.....	<input checked="" type="checkbox"/>	<input type="checkbox"/>
• opportunity for civic or community engagement.....	<input type="checkbox"/>	<input checked="" type="checkbox"/>
• internet safety program.....	<input checked="" type="checkbox"/>	<input type="checkbox"/>
• International Baccalaureate.....	<input type="checkbox"/>	<input checked="" type="checkbox"/>
• extracurricular activities.....	<input type="checkbox"/>	<input checked="" type="checkbox"/>
• athletics.....	<input type="checkbox"/>	<input checked="" type="checkbox"/>
• preschool program.....	<input type="checkbox"/>	<input checked="" type="checkbox"/>
• full-day kindergarten program.....	<input type="checkbox"/>	<input checked="" type="checkbox"/>
• before-and-after-school care program.....	<input type="checkbox"/>	<input checked="" type="checkbox"/>

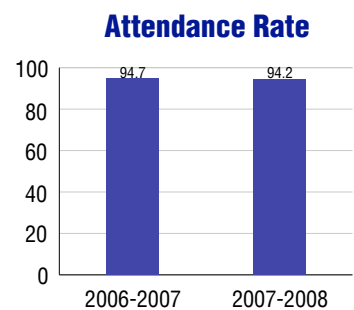
Safety and Discipline

Safe schools are a top priority for parents, teachers, and communities. Your school safety and discipline record for the 2007-2008 school year is:

Type of Incident	Number of Incidents Reported	Percent of Total Incidents
Substance Abuse - Drugs		
Substance Abuse - Alcohol		
Substance Abuse - Tobacco	1	7.1%
Felony Assaults		
Fights	3	21.4%
Possession of Dangerous Weapons	1	7.1%
Other Violations Code of Conduct	9	64.3%

Student Attendance and School Calendar

2007-2008	Your School
Enrollment	309
Average Daily Attendance	291
Student Dropouts	N/A



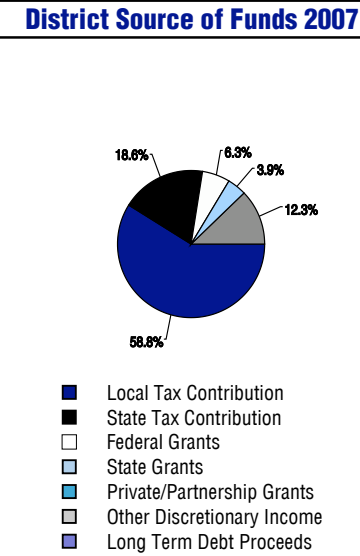
Student Information Over Time

	2005-2006	2006-2007	2007-2008
Student Enrollment Stability	92.6%	94.8%	96.1%
Students Eligible for Free and Reduced Lunch	40.8 %	37.1 %	36.2 %

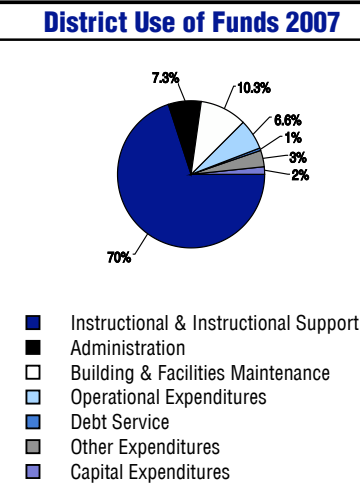
For more information and further details about this report, visit www.state.co.us/schools
 Colorado Department of Education, 201 East Colfax Ave. Denver, CO 80203
Sunset Elementary School
 2020/8398/E
 800 West 7th Street . Craig, CO 81625 . 970-824-5762
 10/20/2008

DISTRICT TAXPAYER'S REPORT

Sources of School District Revenue	2007
Local Tax Contribution	\$11,952,220
State Tax Contribution	3,775,773
Federal Grants	1,274,329
State Grants	801,332
Private/Partnership Grants	0
Other Discretionary Income	2,506,082
Total District Operating Revenue	\$20,309,736
Long Term Debt Proceeds	0
Total District Revenue	\$20,309,736
Total District Operating Revenue Per Pupil =	\$9,184
Total District Revenue Per Pupil (Including Long Term Debt) =	\$9,184
District Per Pupil Operating Revenue =	\$5,591
State Average Per Pupil Operating Revenue =	\$6,080



District Use of Funds	2007
Instructional & Instructional Support	\$14,277,029
Administration	1,479,876
Building & Facilities Maintenance	2,088,354
Operational Expenditures	1,342,350
Debt Service	132,473
Other Expenditures	687,467
Total District Operating Expenditures	\$20,007,549
Capital Expenditures	365,462
Total District Use of Funds	\$20,373,011



District Debt and Capital Construction & Equipment

Total Outstanding Bonded Debt	\$0
Average Annual Percentage Interest Rate on Debt	0%
Amount Raised from Most Recent Bond	\$0
Amount Spent on New Buildings During Last 2 Years	\$0

Accreditation

Accreditation is Colorado's primary accountability system, incorporating achievement levels, academic growth, achievement gaps, post-secondary readiness, improvement planning, and compliance. The state accredits districts and districts accredit individual schools.

District Accreditation Status for the 2007-2008 school year:

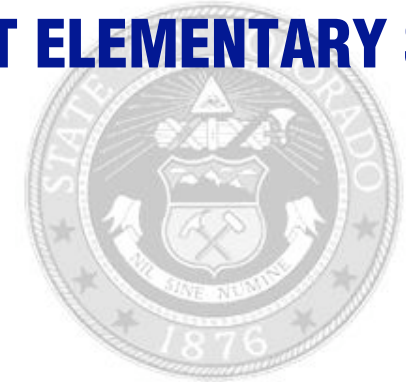
Voter Approved Funding Changes

Your community did /did not hold an election in November 2006

The following items have been approved by voters:

- TABOR Override
- Bond
- Mill Levy Increase

SUNSET ELEMENTARY SCHOOL



MOFFAT COUNTY RE:NO 1

<http://www.moffatsd.org/>

School Accountability Report 2007-2008 School Year

School Performance Summary

Overall Academic Performance on State Assessments **Average**

Academic Growth of Students **Typical**

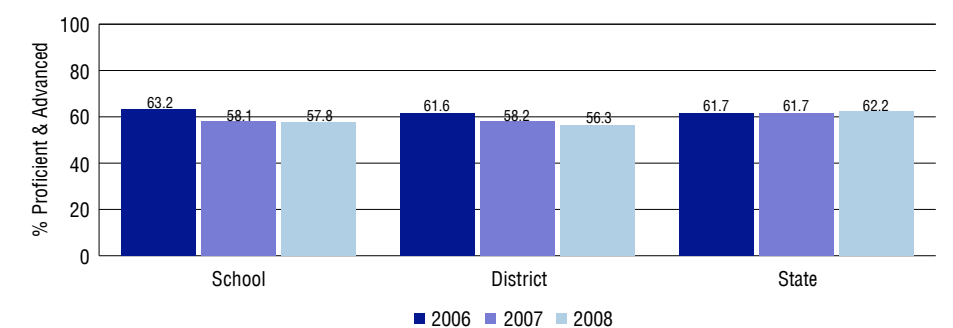
Overall Academic Performance on State Assessments

Each school in the State received a rating of "Excellent", "High", "Average", "Low", or "Unsatisfactory" for student academic performance based on 2007-2008 CSAP and COACT results. The rating is calculated using weighted percentages of each CSAP proficiency level for all content area and grade results for the school, as well as average COACT Reading, Writing, and Math Grade 11 results.

Academic Growth of Students

Each school in the State received a rating of "Low", "Typical", or "High" for student academic growth based on CSAP results. The calculation method is new for 2007-2008. The rating is calculated using student percentile scores matched over two years. More information about the Overall Academic Performance rating and Academic Growth of Students calculations can be found here: http://www.cde.state.co.us/cdeassess/SAR_Info.html.

Percent Proficient and Advanced for Elementary Grades for All Content Areas



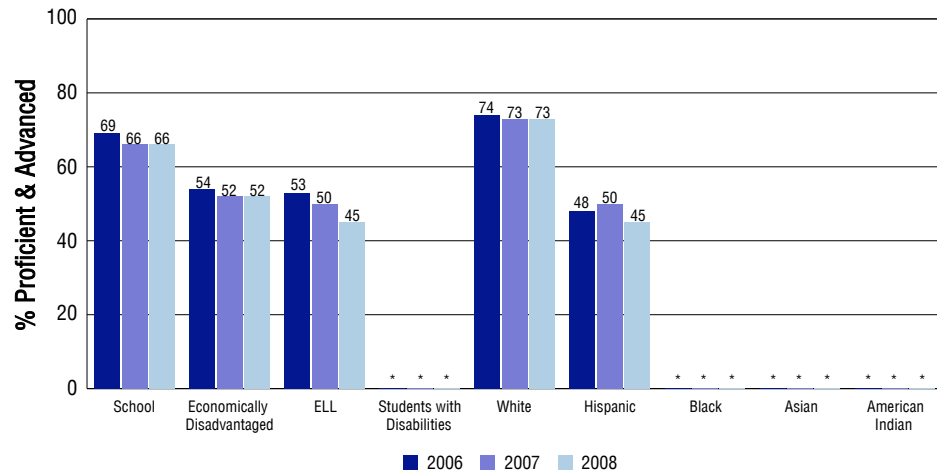
Student Test Scores Used For Calculating Overall Academic Performance

86.7%	Test Scores Counted
5.4%	Test Scores not used due to Language
7.9%	Test Scores not used due to New Student

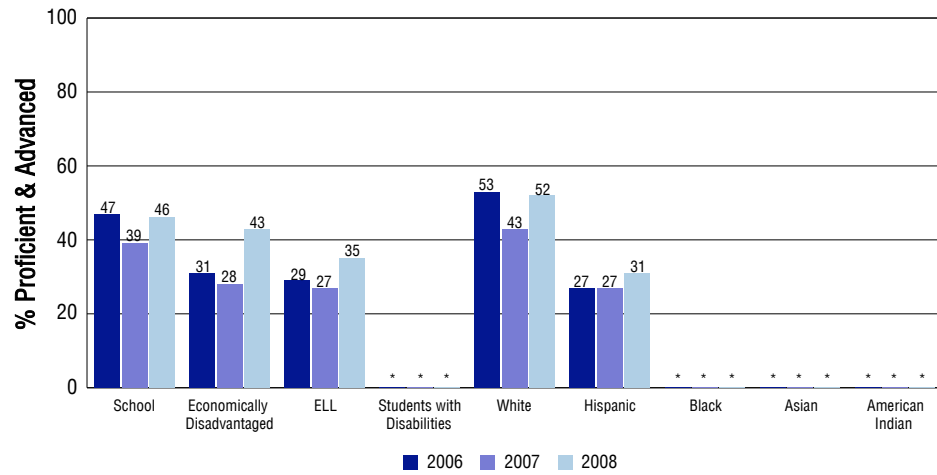
STUDENT PERFORMANCE

These graphs show the percent Proficient and Advanced trends over the past three years for Reading, Writing, and Math. Results are presented for the entire school for all reported grades as well as for different subgroups. Note: * indicates any group with less than 16 student results to be reported.

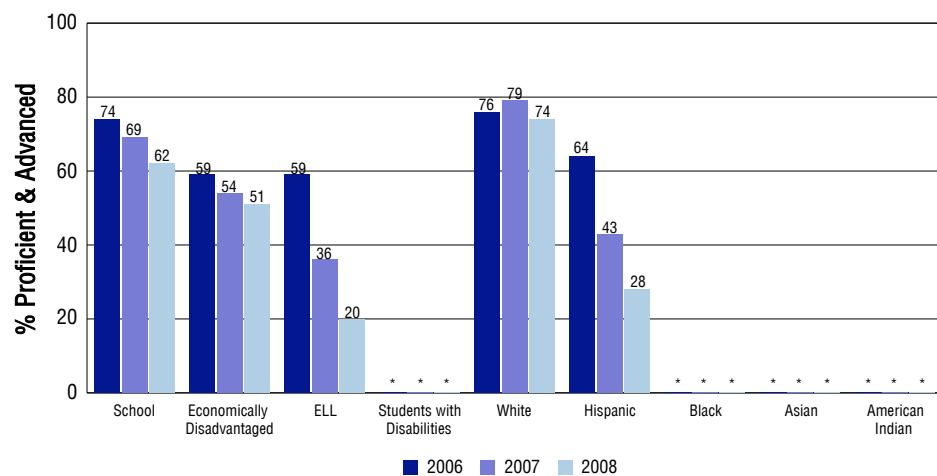
Reading



Writing



Math



SCHOOL INFORMATION

School Pride (as submitted by your district)

- We pride ourselves for providing a well rounded education that includes reading, writing and math, and also music, phys. ed., art, social sciences and science.
- Music offers a 4th grade choir, piano instruction, and music programs K4. PE offers swimming lessons, a dance unit, and a 4th grade skills demonstration.
- We offered two 5 week sessions of afterschool enrichment classes for students that included athletic, computer, science, literacy, craft and music activities.
- Our parent organization raised money to support technology, field trips, curricular activities, extracurricular activities and equipment for our music program.

School Goals (as submitted by your district)

Our reading, math and writing achievement goals are to raise every 4th grade student who was below proficiency on the 3rd grade CSAP one third of a proficiency level on the CSAP. The other half of our math, reading, and writing achievement goals is to have students who scored proficient and better on the CSAP have an average of no loss of a third of a proficiency level on the CSAP from 3rd to 4th. The CSAPs taken in 2007 showed that progress was made toward these goals, but not to the degree our goal stated. We continue striving to attain this goal.

No Child Left Behind - Adequate Yearly Progress

Did your school make AYP in reading? Yes Math? Yes
 How many targets does your school have? 20 Met? 20

Based on this school's academic performance, your child may be eligible for one or more of the following; ask your school if your child qualifies for:

Extra academic instruction either before or after-school, or in the summer
 Mentoring

For additional information regarding Adequate Yearly Progress please visit
<http://www.cde.state.co.us/FedPrograms/ayp/index.asp>

How Sunset Elementary School Compares To Elementary Schools Within A 75-Mile Radius

School	Program Type	Academic Performance	Academic Growth
Craig Intermediate School		Average	Typical
East Elementary School		Average	Typical
Ridgeview Elementary School		Average	Low
Hayden Valley Elementary School(1)		High	Typical
Maybell Elementary School		Average	No Rating
North Routt Charter School(2)	Charter	Average	No Rating
Meeker Elementary School(3)		High	Typical
Soda Creek Elementary School(2)		High	Typical
Strawberry Park Elementary School(2)		Excellent	Typical
South Routt Elementary School(4)		Average	Low

- 1 Located in Hayden RE-1 School District.
- 2 Located in Steamboat Springs RE-2 School District.
- 3 Located in Meeker Re1 School District.
- 4 Located in South Routt RE 3 School District.

ABOUT OUR STAFF

School Employment

Each year, your district reports to the Colorado Department of Education on the number of adults who work in your school, as well as the type of work they do. Last year, your school employed:

	Your School		District	
	Full Time	Part Time	Full Time	Part Time
Teachers	16	4	137	12
Paraprofessionals	11	0	69	21
Administrators	1	0	16	3
Other Professionals	1	0	11	7
School Support	3	3	42	46
School Counselors	1	0	8	1
School Librarians	0	0	2	0
Total Staff	40		363	

Students per Teacher Ratio

	Student Enrollment	Students per Teacher
Grade 1	64	17
Grade 2	54	14.3
Grade 3	59	15.7
Grade 4	72	19.1

Professional Experience of Teachers

	Your School	District
Average years of teaching experience	16	13
Percent of teachers teaching in the subject in which they received their degree	N/A	N/A
Number of teachers with Masters or Doctoral degrees	12	77
Teachers with 3 years or more of teaching experience	18	119
Teachers with less than 3 years of teaching experience	2	30
Number of professional development days	3	3

Salaries

	Your School	District	State
Average Teacher Salary	\$50,846	\$46,337	\$47,494
Average Administrator Salary	\$67,375	\$67,087	\$80,444

Principal: Zachary Allen

Number of years as Principal at this school: 3

Number of years as Principal at any school: 3