

# SAFETY AND SCHOOL ENVIRONMENT

## Non-CSAP Course Offerings

Your School Offers	does	does not
• art.....	<input checked="" type="checkbox"/>	<input type="checkbox"/>
• drama or theater.....	<input checked="" type="checkbox"/>	<input type="checkbox"/>
• music.....	<input checked="" type="checkbox"/>	<input type="checkbox"/>
• physical education.....	<input checked="" type="checkbox"/>	<input type="checkbox"/>
• opportunity for civic or community engagement.....	<input checked="" type="checkbox"/>	<input type="checkbox"/>
• internet safety program.....	<input checked="" type="checkbox"/>	<input type="checkbox"/>
• International Baccalaureate.....	<input type="checkbox"/>	<input checked="" type="checkbox"/>
• extracurricular activities.....	<input checked="" type="checkbox"/>	<input type="checkbox"/>
• athletics.....	<input checked="" type="checkbox"/>	<input type="checkbox"/>
• career and technical education.....	<input checked="" type="checkbox"/>	<input type="checkbox"/>
• advanced placement.....	<input type="checkbox"/>	<input checked="" type="checkbox"/>
• honors.....	<input checked="" type="checkbox"/>	<input type="checkbox"/>

## Safety and Discipline

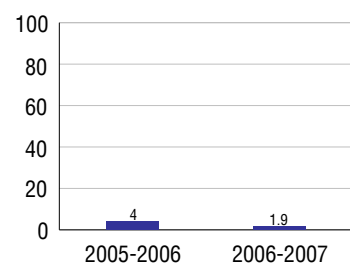
Safe schools are a top priority for parents, teachers, and communities. Your school safety and discipline record for the 2007-2008 school year is:

Type of Incident	Number of Incidents Reported	Percent of Total Incidents
Substance Abuse - Drugs		
Substance Abuse - Alcohol		
Substance Abuse - Tobacco	1	3.3%
Felony Assaults		
Fights	3	10.0%
Possession of Dangerous Weapons		
Other Violations Code of Conduct	26	86.7%

## Student Attendance and School Calendar

2007-2008	Your School
Enrollment	153
Average Daily Attendance	143
Student Dropouts	1.9%

## Dropout Rate



## Student Information Over Time

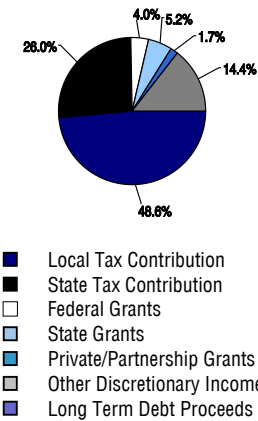
	2005-2006	2006-2007	2007-2008
Student Enrollment Stability	98.7%	100.0%	99.3%
Students Eligible for Free and Reduced Lunch	9.2 %	15.1 %	13.1 %

For more information and further details about this report, visit [www.state.co.us/schools](http://www.state.co.us/schools)  
 Colorado Department of Education, 201 East Colfax Ave. Denver, CO 80203  
**Hayden High School**  
 2760/3862/H  
 495 West Jefferson Street . Hayden, CO 81639 . 970-276-3761  
 10/20/2008

# DISTRICT TAXPAYER'S REPORT

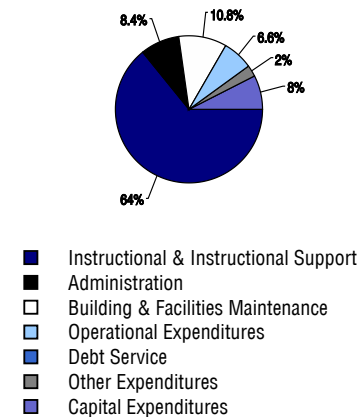
Sources of School District Revenue	2007
Local Tax Contribution	\$2,543,620
State Tax Contribution	1,361,007
Federal Grants	209,751
State Grants	272,933
Private/Partnership Grants	91,500
Other Discretionary Income	755,224
<b>Total District Operating Revenue</b>	<b>\$5,234,035</b>
Long Term Debt Proceeds	0
<b>Total District Revenue</b>	<b>\$5,234,035</b>
<b>Total District Operating Revenue Per Pupil =</b>	<b>\$12,522</b>
<b>Total District Revenue Per Pupil (Including Long Term Debt) =</b>	<b>\$12,522</b>
<b>District Per Pupil Operating Revenue =</b>	<b>\$7,315</b>
<b>State Average Per Pupil Operating Revenue =</b>	<b>\$6,080</b>

## District Source of Funds 2007



District Use of Funds	2007
Instructional & Instructional Support	\$3,303,107
Administration	430,933
Building & Facilities Maintenance	553,401
Operational Expenditures	337,296
Debt Service	0
Other Expenditures	126,188
<b>Total District Operating Expenditures</b>	<b>\$4,750,925</b>
Capital Expenditures	387,001
<b>Total District Use of Funds</b>	<b>\$5,137,926</b>

## District Use of Funds 2007



## District Debt and Capital Construction & Equipment

Total Outstanding Bonded Debt	\$0
Average Annual Percentage Interest Rate on Debt	0%
Amount Raised from Most Recent Bond	\$0
Amount Spent on New Buildings During Last 2 Years	\$0

## Accreditation

Accreditation is Colorado's primary accountability system, incorporating achievement levels, academic growth, achievement gaps, post-secondary readiness, improvement planning, and compliance. The state accredits districts and districts accredit individual schools.

District Accreditation Status for the 2007-2008 school year:

## Voter Approved Funding Changes

Your community did  /did not  hold an election in November 2006

The following items have been approved by voters:

- TABOR Override
- Bond
- Mill Levy Increase

# HAYDEN HIGH SCHOOL



**HAYDEN RE-1**

[www.haydensd.org](http://www.haydensd.org)

## School Accountability Report 2007-2008 School Year

### School Performance Summary

**Overall Academic Performance on State Assessments** **Average**

**Academic Growth of Students** **Typical**

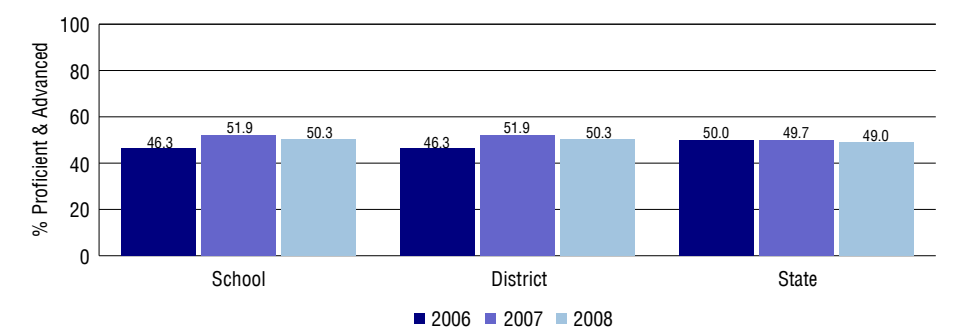
### Overall Academic Performance on State Assessments

Each school in the State received a rating of "Excellent", "High", "Average", "Low", or "Unsatisfactory" for student academic performance based on 2007-2008 CSAP and COACT results. The rating is calculated using weighted percentages of each CSAP proficiency level for all content area and grade results for the school, as well as average COACT Reading, Writing, and Math Grade 11 results.

### Academic Growth of Students

Each school in the State received a rating of "Low", "Typical", or "High" for student academic growth based on CSAP results. The calculation method is new for 2007-2008. The rating is calculated using student percentile scores matched over two years. More information about the Overall Academic Performance rating and Academic Growth of Students calculations can be found here: [http://www.cde.state.co.us/cdeassess/SAR\\_Info.html](http://www.cde.state.co.us/cdeassess/SAR_Info.html).

## Percent Proficient and Advanced for High Grades for All Content Areas



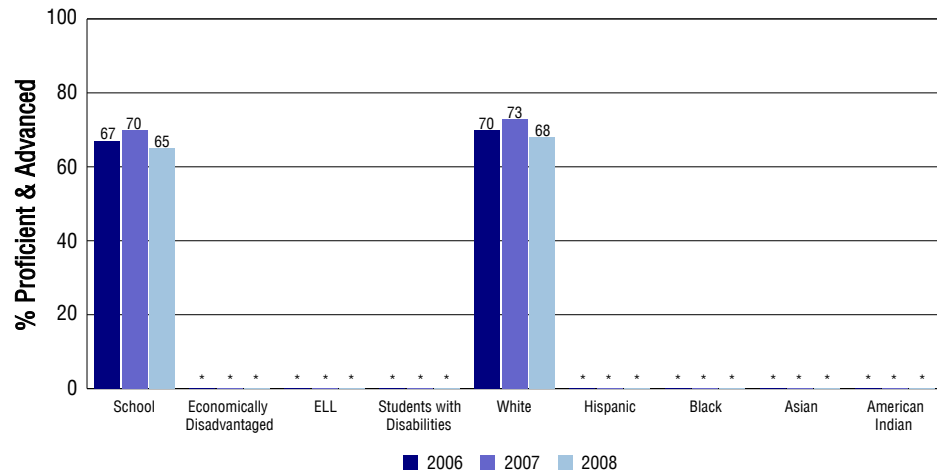
## Student Test Scores Used For Calculating Overall Academic Performance

97.2%	Test Scores Counted
1.4%	Test Scores not used due to Language
1.4%	Test Scores not used due to New Student

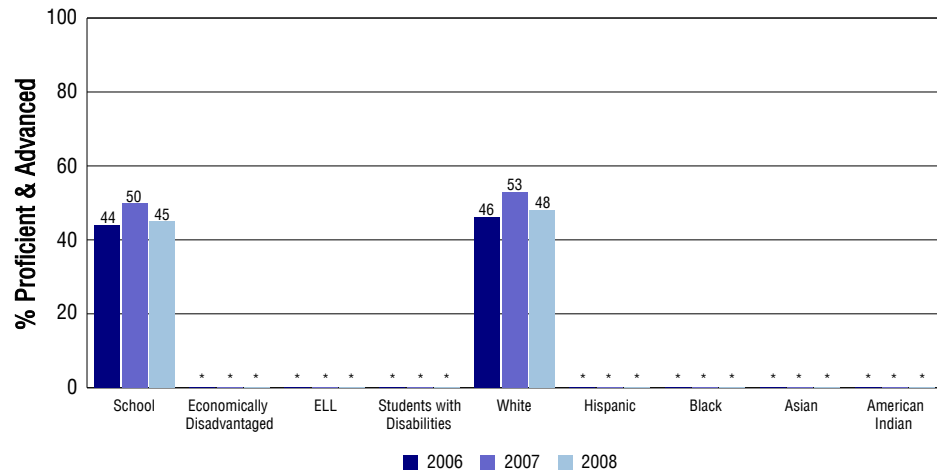
## STUDENT PERFORMANCE

These graphs show the percent Proficient and Advanced trends over the past three years for Reading, Writing, and Math. Results are presented for the entire school for all reported grades as well as for different subgroups. Note: \* indicates any group with less than 16 student results to be reported.

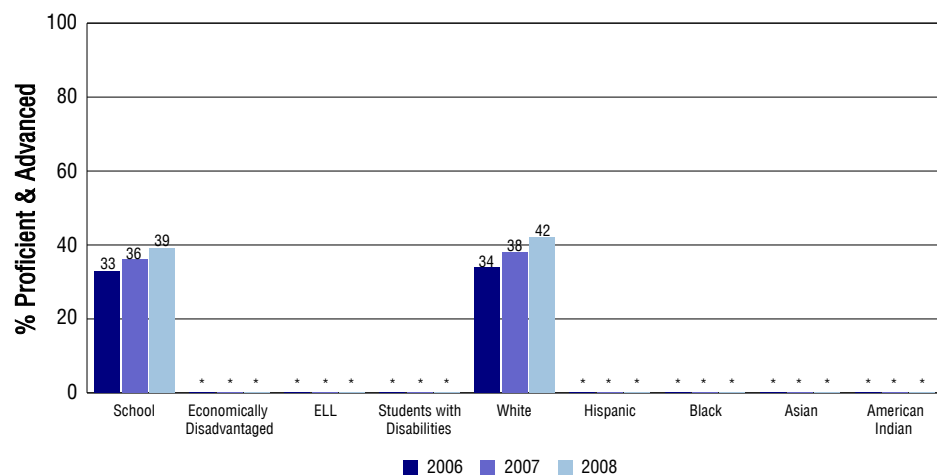
### Reading



### Writing



### Math



## SCHOOL INFORMATION

### School Pride (as submitted by your district)

- HHS has a wide range of college and honors course offerings.
- HHS has an extensive list of high quality vocational offerings.
- HHS is above average in all state testing areas.
- Over 50 percent of the student body participates in some form of extracurricular activities.

### School Goals (as submitted by your district)

HHS has set goals for the full implementation of the Professional Learning Communities philosophies and procedures. We have also established goals around the implementation of the Response to Interventions and Positive Behavior Support Models. HHS has set a goal of decreasing the number of students below proficiency on CSAP by 10 percent per year. HHS has set a goal of expanding our elective and college course offerings. This goal is being established through student needs assessments and the school improvement team process.

### No Child Left Behind - Adequate Yearly Progress

Did your school make AYP in reading?	Yes	Math?	Yes
Did your school make the graduation rate targets?	Yes		
How many targets does your school have?	10	Met?	10

Based on this school's academic performance, your child may be eligible for one or more of the following; ask your school if your child qualifies for:

Extra academic instruction either before or after-school, or in the summer  
Mentoring

For additional information regarding Adequate Yearly Progress please visit  
<http://www.cde.state.co.us/FedPrograms/ayp/index.asp>

### How Hayden High School Compares To High Schools Within A 75-Mile Radius

School	Program Type	Academic Performance	Academic Growth
Moffat County High School(1)		Average	Typical
Soroco High School(2)		High	High
Yampa Valley High School(3)	Alternative	Low	No Rating
Steamboat Springs High School(4)		Excellent	Typical
Meeker High School(5)		High	Typical
North Park Junior-Senior High School(6)		High	Typical
West Grand High School(7)		High	High
Eagle Valley High School(8)		High	Low
Yampah Mountain School(9)	Alternative	Low	No Rating
Coal Ridge High School(10)		Average	Low

1 Located in Moffat County Re:No 1 School District.  
2 Located in South Routt RE 3 School District.  
3 Located in Northwest Colo Boces School District.  
4 Located in Steamboat Springs RE-2 School District.  
5 Located in Meeker Re1 School District.

6 Located in North Park R-1 School District.  
7 Located in West Grand 1-Jt. School District.  
8 Located in Eagle County RE 50 School District.  
9 Located in Mountain Boces School District.  
10 Located in GARFIELD RE-2 School District.

## ABOUT OUR STAFF

### School Employment

Each year, your district reports to the Colorado Department of Education on the number of adults who work in your school, as well as the type of work they do. Last year, your school employed:

	Your School		District	
	Full Time	Part Time	Full Time	Part Time
Teachers	12	3	33	5
Paraprofessionals	1	0	8	2
Administrators	1	0	4	0
Other Professionals	0	0	4	2
School Support	0	1	2	1
School Counselors	2	0	2	0
School Librarians	0	0	0	0
<b>Total Staff</b>	20		62	

### Students per Teacher Ratio

	Student Enrollment	Students per Teacher
Grade 9	40	11.6
Grade 10	44	12.8
Grade 11	35	10.2
Grade 12	34	9.9

### Professional Experience of Teachers

	Your School	District
Average years of teaching experience	7	12
Percent of teachers teaching in the subject in which they received their degree	93%	95%
Number of teachers with Masters or Doctoral degrees	7	20
Teachers with 3 years or more of teaching experience	9	27
Teachers with less than 3 years of teaching experience	6	11
Number of professional development days	14	14

### Salaries

	Your School	District	State
Average Teacher Salary	\$41,769	\$42,147	\$47,494
Average Administrator Salary	\$63,900	\$66,927	\$80,444

Principal: Troy Zabel

Number of years as Principal at this school: 4

Number of years as Principal at any school: 9