

SAFETY AND SCHOOL ENVIRONMENT

Non-CSAP Course Offerings

Your School Offers	does	does not
• art.....	<input checked="" type="checkbox"/>	<input type="checkbox"/>
• drama or theater.....	<input type="checkbox"/>	<input checked="" type="checkbox"/>
• music.....	<input checked="" type="checkbox"/>	<input type="checkbox"/>
• physical education.....	<input checked="" type="checkbox"/>	<input type="checkbox"/>
• opportunity for civic or community engagement.....	<input checked="" type="checkbox"/>	<input type="checkbox"/>
• internet safety program.....	<input checked="" type="checkbox"/>	<input type="checkbox"/>
• International Baccalaureate.....	<input type="checkbox"/>	<input checked="" type="checkbox"/>
• extracurricular activities.....	<input checked="" type="checkbox"/>	<input type="checkbox"/>
• athletics.....	<input checked="" type="checkbox"/>	<input type="checkbox"/>
• career and technical education.....	<input type="checkbox"/>	<input checked="" type="checkbox"/>
• honors.....	<input type="checkbox"/>	<input checked="" type="checkbox"/>

Safety and Discipline

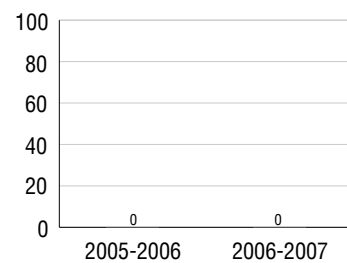
Safe schools are a top priority for parents, teachers, and communities. Your school safety and discipline record for the 2007-2008 school year is:

Type of Incident	Number of Incidents Reported	Percent of Total Incidents
Substance Abuse - Drugs		
Substance Abuse - Alcohol	1	1.3%
Substance Abuse - Tobacco	3	3.9%
Felony Assaults		
Fights		
Possession of Dangerous Weapons	2	2.6%
Other Violations Code of Conduct	71	92.2%

Student Attendance and School Calendar

2007-2008	Your School
Enrollment	89
Average Daily Attendance	80
Student Dropouts	0.0%

Dropout Rate



Student Information Over Time

	2005-2006	2006-2007	2007-2008
Student Enrollment Stability	96.6%	95.2%	96.6%
Students Eligible for Free and Reduced Lunch	23.9 %	19.2 %	23.6 %

For more information and further details about this report, visit www.state.co.us/schools
Colorado Department of Education, 201 East Colfax Ave. Denver, CO 80203

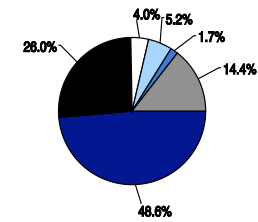
Hayden Middle School
2760/3860/M

495 West Jefferson Street . Hayden, CO 81639 . 970-276-3762
10/20/2008

DISTRICT TAXPAYER'S REPORT

Sources of School District Revenue	2007
Local Tax Contribution	\$2,543,620
State Tax Contribution	1,361,007
Federal Grants	209,751
State Grants	272,933
Private/Partnership Grants	91,500
Other Discretionary Income	755,224
Total District Operating Revenue	\$5,234,035
Long Term Debt Proceeds	0
Total District Revenue	\$5,234,035
Total District Operating Revenue Per Pupil =	\$12,522
Total District Revenue Per Pupil (Including Long Term Debt) =	\$12,522
District Per Pupil Operating Revenue =	\$7,315
State Average Per Pupil Operating Revenue =	\$6,080

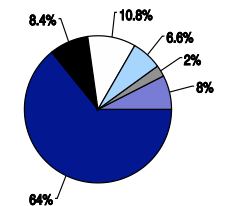
District Source of Funds 2007



■ Local Tax Contribution
■ State Tax Contribution
■ Federal Grants
■ State Grants
■ Private/Partnership Grants
■ Other Discretionary Income
■ Long Term Debt Proceeds

District Use of Funds	2007
Instructional & Instructional Support	\$3,303,107
Administration	430,933
Building & Facilities Maintenance	553,401
Operational Expenditures	337,296
Debt Service	0
Other Expenditures	126,188
Total District Operating Expenditures	\$4,750,925
Capital Expenditures	387,001
Total District Use of Funds	\$5,137,926

District Use of Funds 2007



■ Instructional & Instructional Support
■ Administration
■ Building & Facilities Maintenance
■ Operational Expenditures
■ Debt Service
■ Other Expenditures
■ Capital Expenditures

District Debt and Capital Construction & Equipment

Total Outstanding Bonded Debt	\$0
Average Annual Percentage Interest Rate on Debt	0%
Amount Raised from Most Recent Bond	\$0
Amount Spent on New Buildings During Last 2 Years	\$0

Accreditation

Accreditation is Colorado's primary accountability system, incorporating achievement levels, academic growth, achievement gaps, post-secondary readiness, improvement planning, and compliance. The state accredits districts and districts accredit individual schools.

District Accreditation Status for the 2007-2008 school year:

Voter Approved Funding Changes

Your community did /did not hold an election in November 2006

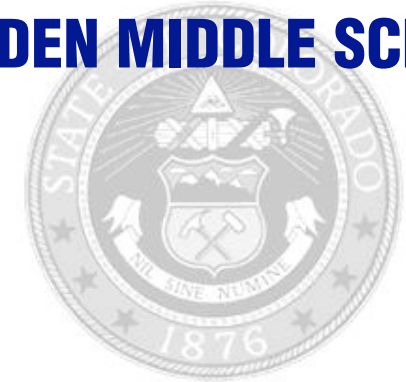
The following items have been approved by voters:

TABOR Override

Bond

Mill Levy Increase

HAYDEN MIDDLE SCHOOL



HAYDEN RE-1

www.haydensd.org

School Accountability Report 2007-2008 School Year

School Performance Summary

Overall Academic Performance on State Assessments **Average**

Academic Growth of Students **Typical**

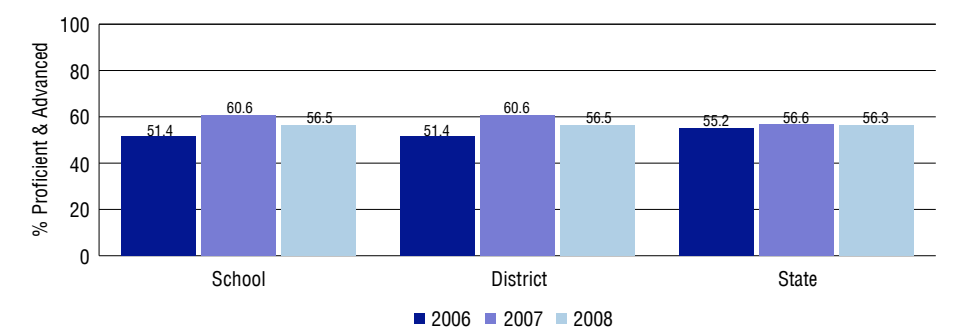
Overall Academic Performance on State Assessments

Each school in the State received a rating of "Excellent", "High", "Average", "Low", or "Unsatisfactory" for student academic performance based on 2007-2008 CSAP and COACT results. The rating is calculated using weighted percentages of each CSAP proficiency level for all content area and grade results for the school, as well as average COACT Reading, Writing, and Math Grade 11 results.

Academic Growth of Students

Each school in the State received a rating of "Low", "Typical", or "High" for student academic growth based on CSAP results. The calculation method is new for 2007-2008. The rating is calculated using student percentile scores matched over two years. More information about the Overall Academic Performance rating and Academic Growth of Students calculations can be found here: http://www.cde.state.co.us/cdeassess/SAR_Info.html.

Percent Proficient and Advanced for Middle Grades for All Content Areas



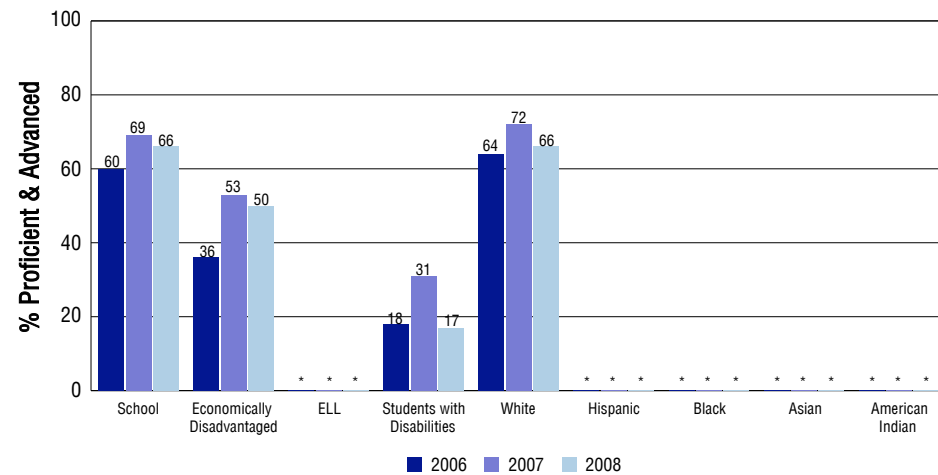
Student Test Scores Used For Calculating Overall Academic Performance

99.0%	Test Scores Counted
1.0%	Test Scores not used due to Language
0.0%	Test Scores not used due to New Student

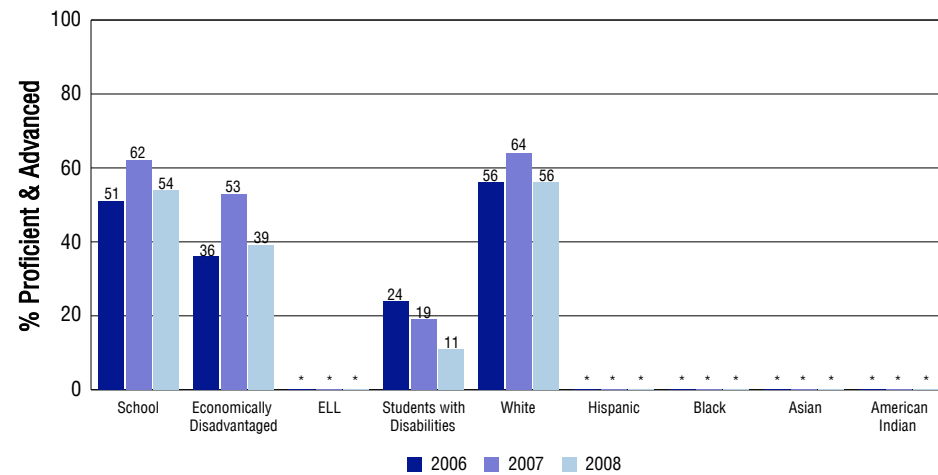
STUDENT PERFORMANCE

These graphs show the percent Proficient and Advanced trends over the past three years for Reading, Writing, and Math. Results are presented for the entire school for all reported grades as well as for different subgroups. Note: * indicates any group with less than 16 student results to be reported.

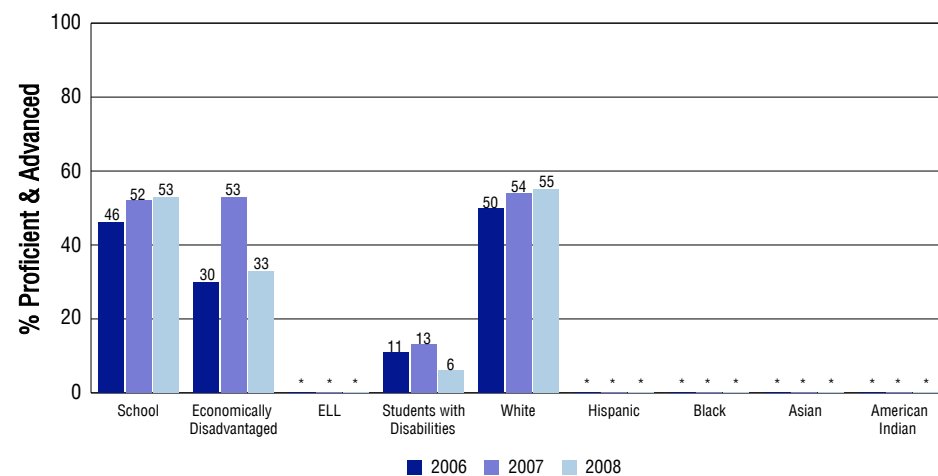
Reading



Writing



Math



SCHOOL INFORMATION

School Pride (as submitted by your district)

- Students participate in a variety of extracurricular opportunities including sports teams, Destination Imagination, Student Council and others.
- Daily opportunities for study hall/homework support during the school day, as well as on Friday afternoons.
- We have an active school improvement team and active community partnerships. We offer many opportunities for fundraising.
- Our students participate in after school activities to celebrate and motivate our families, students and teachers.

School Goals (as submitted by your district)

Our middle school goals focus on data driven instruction, progress monitoring and responses to intervention and enrichment. We continue to work on our professional learning communities, positive behavior support systems and response to intervention. Our professional development is centered upon these models and is differentiated in implementation based upon our teachers' needs. In addition, we are working towards a goal of increasing overall student motivation for academics, in which our school improvement team and our student leadership are instrumental in implementing.

No Child Left Behind - Adequate Yearly Progress

Did your school make AYP in reading? Yes Math? Yes
 How many targets does your school have? 12 Met? 12

Based on this school's academic performance, your child may be eligible for one or more of the following; ask your school if your child qualifies for:

Extra academic instruction either before or after-school, or in the summer
 Mentoring

For additional information regarding Adequate Yearly Progress please visit
<http://www.cde.state.co.us/FedPrograms/ayp/index.asp>

How Hayden Middle School Compares To Middle Schools Within A 75-Mile Radius

School	Program Type	Academic Performance	Academic Growth
Craig Middle School School(1)		Average	Low
Soroco Middle School(2)		High	Low
Steamboat Springs Middle School(3)		Excellent	Typical
North Routt Charter School(3)	Charter	High	No Rating
Barone Middle School(4)		High	Typical
North Park Junior-Senior High School(5)		High	Typical
West Grand Middle School(6)		Average	Low
Gypsum Creek Middle School(7)		High	High
Eagle Valley Middle School(7)		High	Typical
Glenwood Springs Middle School(8)		High	High

1 Located in Moffat County Re:No 1 School District.
 2 Located in South Routt RE 3 School District.
 3 Located in Steamboat Springs RE-2 School District.
 4 Located in Meeker Re1 School District.
 5 Located in North Park R-1 School District.

6 Located in West Grand 1-Jt. School District.
 7 Located in Eagle County RE 50 School District.
 8 Located in Roaring Fork RE-1 School District.

ABOUT OUR STAFF

School Employment

Each year, your district reports to the Colorado Department of Education on the number of adults who work in your school, as well as the type of work they do. Last year, your school employed:

	Your School		District	
	Full Time	Part Time	Full Time	Part Time
Teachers	8	1	33	5
Paraprofessionals	1	0	8	2
Administrators	1	0	4	0
Other Professionals	0	0	4	2
School Support	0	0	2	1
School Counselors	0	0	2	0
School Librarians	0	0	0	0
Total Staff	11		62	

Students per Teacher Ratio

	Student Enrollment	Students per Teacher
Grade 6	25	7.2
Grade 7	32	11.6
Grade 8	32	11.6

Professional Experience of Teachers

	Your School	District
Average years of teaching experience	12	12
Percent of teachers teaching in the subject in which they received their degree	100%	95%
Number of teachers with Masters or Doctoral degrees	4	20
Teachers with 3 years or more of teaching experience	5	27
Teachers with less than 3 years of teaching experience	4	11
Number of professional development days	14	14

Salaries

	Your School	District	State
Average Teacher Salary	\$38,052	\$42,147	\$47,494
Average Administrator Salary	\$60,301	\$66,927	\$80,444

Principal: Regina Zabel

Number of years as Principal at this school: 1 (New Hire 2007/2008)

Number of years as Principal at any school: 3