

SAFETY AND SCHOOL ENVIRONMENT

Non-CSAP Course Offerings

Your School Offers	does	does not
• art.....	<input checked="" type="checkbox"/>	<input type="checkbox"/>
• drama or theater.....	<input checked="" type="checkbox"/>	<input type="checkbox"/>
• music.....	<input checked="" type="checkbox"/>	<input type="checkbox"/>
• physical education.....	<input checked="" type="checkbox"/>	<input type="checkbox"/>
• opportunity for civic or community engagement.....	<input checked="" type="checkbox"/>	<input type="checkbox"/>
• internet safety program.....	<input checked="" type="checkbox"/>	<input type="checkbox"/>
• International Baccalaureate.....	<input type="checkbox"/>	<input checked="" type="checkbox"/>
• extracurricular activities.....	<input checked="" type="checkbox"/>	<input type="checkbox"/>
• athletics.....	<input checked="" type="checkbox"/>	<input type="checkbox"/>
• career and technical education.....	<input checked="" type="checkbox"/>	<input type="checkbox"/>
• advanced placement.....	<input type="checkbox"/>	<input checked="" type="checkbox"/>
• honors.....	<input checked="" type="checkbox"/>	<input type="checkbox"/>

Safety and Discipline

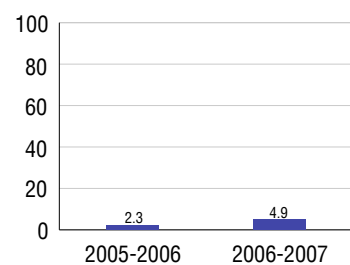
Safe schools are a top priority for parents, teachers, and communities. Your school safety and discipline record for the 2007-2008 school year is:

Type of Incident	Number of Incidents Reported	Percent of Total Incidents
Substance Abuse - Drugs	6	4.6%
Substance Abuse - Alcohol	5	3.8%
Substance Abuse - Tobacco	24	18.5%
Felony Assaults		
Fights	2	1.5%
Possession of Dangerous Weapons	7	5.4%
Other Violations Code of Conduct	86	66.2%

Student Attendance and School Calendar

2007-2008	Your School
Enrollment	716
Average Daily Attendance	660
Student Dropouts	4.9%

Dropout Rate



Student Information Over Time

	2005-2006	2006-2007	2007-2008
Student Enrollment Stability	94.8%	93.9%	95.0%
Students Eligible for Free and Reduced Lunch	16.7 %	21.8 %	20.8 %

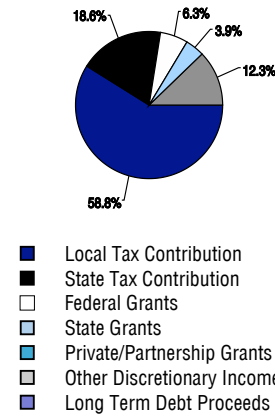
For more information and further details about this report, visit www.state.co.us/schools
 Colorado Department of Education, 201 East Colfax Ave. Denver, CO 80203
Moffat County High School
 2020/5962/H
 900 Finley Lane . Craig, CO 81625 . 970-824-7036
 10/20/2008

DISTRICT TAXPAYER'S REPORT

Sources of School District Revenue 2007

Local Tax Contribution	\$11,952,220
State Tax Contribution	3,775,773
Federal Grants	1,274,329
State Grants	801,332
Private/Partnership Grants	0
Other Discretionary Income	2,506,082
Total District Operating Revenue	\$20,309,736
Long Term Debt Proceeds	0
Total District Revenue	\$20,309,736
Total District Operating Revenue Per Pupil =	\$9,184
Total District Revenue Per Pupil (Including Long Term Debt) =	\$9,184
District Per Pupil Operating Revenue =	\$5,591
State Average Per Pupil Operating Revenue =	\$6,080

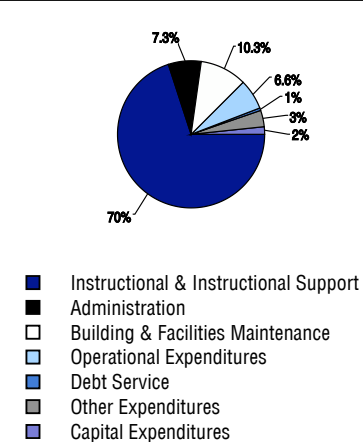
District Source of Funds 2007



District Use of Funds 2007

Instructional & Instructional Support	\$14,277,029
Administration	1,479,876
Building & Facilities Maintenance	2,088,354
Operational Expenditures	1,342,350
Debt Service	132,473
Other Expenditures	687,467
Total District Operating Expenditures	\$20,007,549
Capital Expenditures	365,462
Total District Use of Funds	\$20,373,011

District Use of Funds 2007



District Debt and Capital Construction & Equipment

Total Outstanding Bonded Debt	\$0
Average Annual Percentage Interest Rate on Debt	0%
Amount Raised from Most Recent Bond	\$0
Amount Spent on New Buildings During Last 2 Years	\$0

Accreditation

Accreditation is Colorado's primary accountability system, incorporating achievement levels, academic growth, achievement gaps, post-secondary readiness, improvement planning, and compliance. The state accredits districts and districts accredit individual schools.

District Accreditation Status for the 2007-2008 school year:

Voter Approved Funding Changes

Your community did /did not hold an election in November 2006

The following items have been approved by voters:

TABOR Override

Bond

Mill Levy Increase

MOFFAT COUNTY HIGH SCHOOL



MOFFAT COUNTY RE:NO 1

<http://www.moffatsd.org/>

School Accountability Report 2007-2008 School Year

School Performance Summary

Overall Academic Performance on State Assessments **Average**

Academic Growth of Students **Typical**

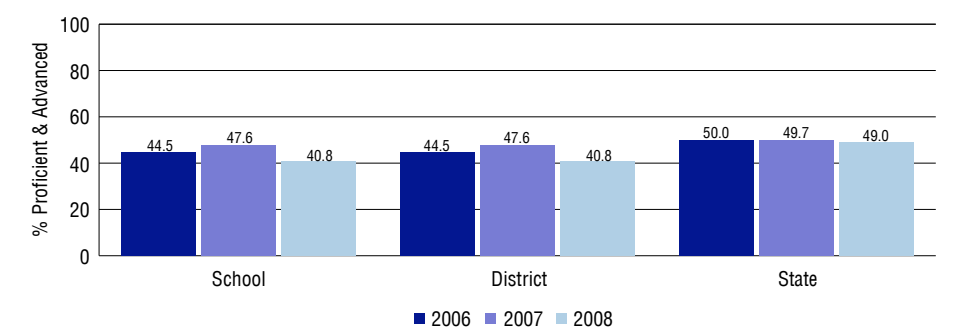
Overall Academic Performance on State Assessments

Each school in the State received a rating of "Excellent", "High", "Average", "Low", or "Unsatisfactory" for student academic performance based on 2007-2008 CSAP and COACT results. The rating is calculated using weighted percentages of each CSAP proficiency level for all content area and grade results for the school, as well as average COACT Reading, Writing, and Math Grade 11 results.

Academic Growth of Students

Each school in the State received a rating of "Low", "Typical", or "High" for student academic growth based on CSAP results. The calculation method is new for 2007-2008. The rating is calculated using student percentile scores matched over two years. More information about the Overall Academic Performance rating and Academic Growth of Students calculations can be found here: http://www.cde.state.co.us/cdeassess/SAR_Info.html.

Percent Proficient and Advanced for High Grades for All Content Areas



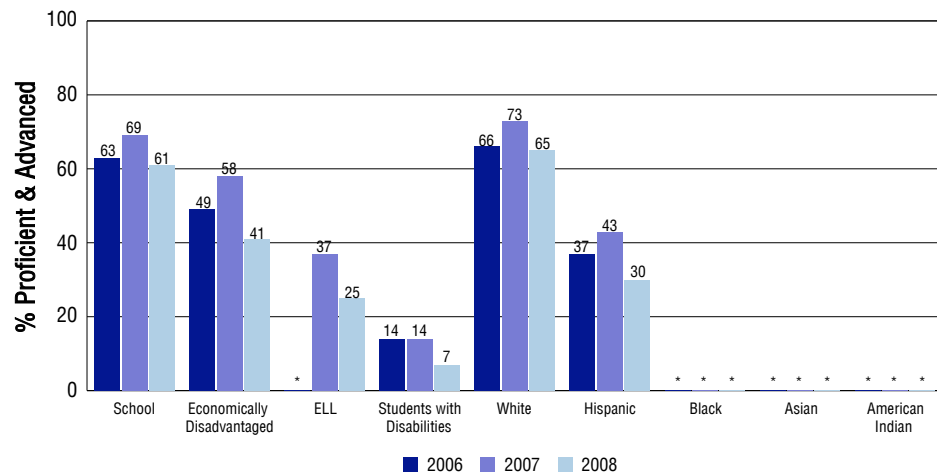
Student Test Scores Used For Calculating Overall Academic Performance

95.5%	Test Scores Counted
1.6%	Test Scores not used due to Language
3.0%	Test Scores not used due to New Student

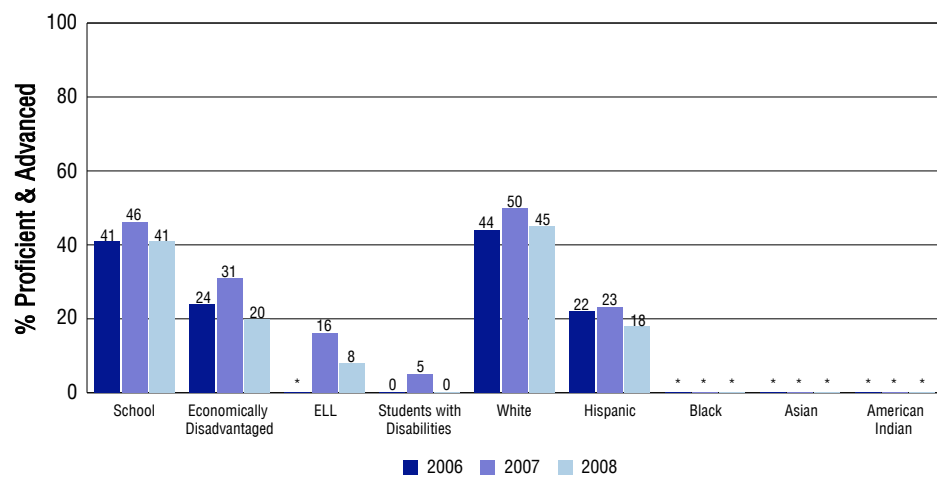
STUDENT PERFORMANCE

These graphs show the percent Proficient and Advanced trends over the past three years for Reading, Writing, and Math. Results are presented for the entire school for all reported grades as well as for different subgroups. Note: * indicates any group with less than 16 student results to be reported.

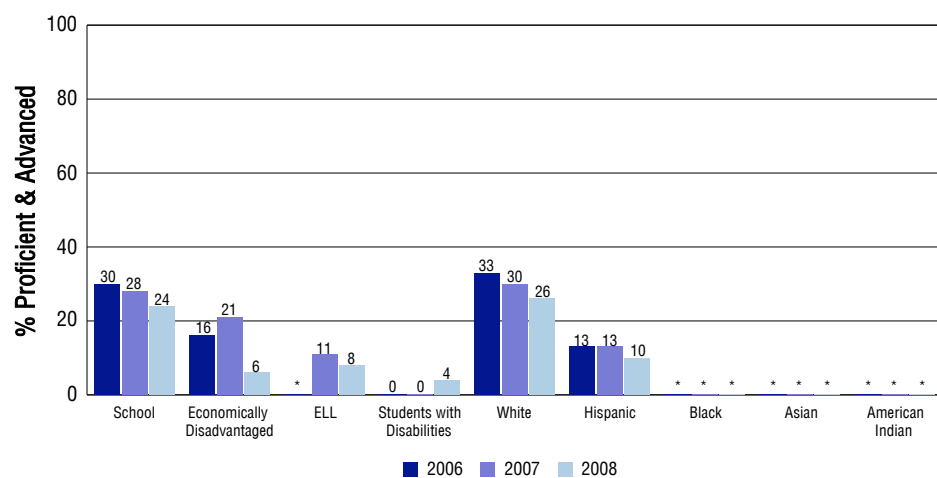
Reading



Writing



Math



SCHOOL INFORMATION

School Pride (as submitted by your district)

- Our students participate and excel in a variety of extracurricular activities, including sports teams, knowledge bowl, speech, DECA, FBLA, and others.
- Growth continues in instrumental and vocal music programs, with approximately 70 students in each program, and ongoing projected growth.
- Intervention programs and counseling support are strong; graduation rate is well above and dropout rate well below state averages.
- Coursework offerings allow students diversity in course selection, from college preparatory to dual credit courses as well as arts and vocational courses.

School Goals (as submitted by your district)

Though our attendance at MCHS is strong, we recognize the need for better attendance among identified students, with significant impact on academic achievement levels. Thus, we implemented strategies to improve student attendance and enforcement of attendance policies. Another major goal is more timely response to student barriers to learning; we incorporated the use of intervention team members as mentors to students identified at high risk for dropping out and increased tutoring availability. A refocusing of supports for positive behaviors as well as efforts to increase parental involvement continue to be necessary for improvement.

No Child Left Behind - Adequate Yearly Progress

Did your school make AYP in reading?	No	Math?	No
Did your school make the graduation rate targets?	No		
How many targets does your school have?	21	Met?	16

Based on this school's academic performance, your child may be eligible for one or more of the following; ask your school if your child qualifies for:

Extra academic instruction either before or after-school, or in the summer
Mentoring

For additional information regarding Adequate Yearly Progress please visit
<http://www.cde.state.co.us/FedPrograms/ayp/index.asp>

How Moffat County High School Compares To High Schools Within A 75-Mile Radius

School	Program Type	Academic Performance	Academic Growth
Hayden High School(1)		Average	Typical
Soroco High School(2)		High	High
Meeker High School(3)		High	Typical
Yampa Valley High School(4)	Alternative	Low	No Rating
Steamboat Springs High School(5)		Excellent	Typical
Coal Ridge High School(6)		Average	Low
Yampah Mountain School(7)	Alternative	Low	No Rating
Eagle Valley High School(8)		High	Low
Glenwood Springs High School(9)		Average	Typical
Rifle High School(6)		Average	Typical

1 Located in Hayden RE-1 School District.
2 Located in South Routt RE 3 School District.
3 Located in Meeker Re1 School District.
4 Located in Northwest Colo Boces School District.
5 Located in Steamboat Springs RE-2 School District.

6 Located in Garfield RE-2 School District.
7 Located in Mountain Boces School District.
8 Located in Eagle County RE 50 School District.
9 Located in Roaring Fork RE-1 School District.

ABOUT OUR STAFF

School Employment

Each year, your district reports to the Colorado Department of Education on the number of adults who work in your school, as well as the type of work they do. Last year, your school employed:

	Your School		District	
	Full Time	Part Time	Full Time	Part Time
Teachers	36	5	137	12
Paraprofessionals	12	3	69	21
Administrators	3	3	16	3
Other Professionals	1	2	11	7
School Support	13	8	42	46
School Counselors	2	0	8	1
School Librarians	1	0	2	0
Total Staff	84		363	

Students per Teacher Ratio

	Student Enrollment	Students per Teacher
Grade 9	167	12.6
Grade 10	182	23.1
Grade 11	180	16.9
Grade 12	187	26.2

Professional Experience of Teachers

	Your School	District
Average years of teaching experience	12	13
Percent of teachers teaching in the subject in which they received their degree	63%	56%
Number of teachers with Masters or Doctoral degrees	18	77
Teachers with 3 years or more of teaching experience	32	119
Teachers with less than 3 years of teaching experience	9	30
Number of professional development days	3	3

Salaries

	Your School	District	State
Average Teacher Salary	\$44,037	\$46,337	\$47,494
Average Administrator Salary	\$69,997	\$67,087	\$80,444

Principal: Jane Harmon

Number of years as Principal at this school: 7

Number of years as Principal at any school: 10