

SAFETY AND SCHOOL ENVIRONMENT

Non-CSAP Course Offerings

Your School Offers	does	does not
• art.....	<input checked="" type="checkbox"/>	<input type="checkbox"/>
• drama or theater.....	<input type="checkbox"/>	<input checked="" type="checkbox"/>
• music.....	<input checked="" type="checkbox"/>	<input type="checkbox"/>
• physical education.....	<input checked="" type="checkbox"/>	<input type="checkbox"/>
• opportunity for civic or community engagement.....	<input checked="" type="checkbox"/>	<input type="checkbox"/>
• internet safety program.....	<input checked="" type="checkbox"/>	<input type="checkbox"/>
• International Baccalaureate.....	<input type="checkbox"/>	<input checked="" type="checkbox"/>
• extracurricular activities.....	<input checked="" type="checkbox"/>	<input type="checkbox"/>
• athletics.....	<input checked="" type="checkbox"/>	<input type="checkbox"/>
• preschool program.....	<input type="checkbox"/>	<input checked="" type="checkbox"/>
• full-day kindergarten program.....	<input checked="" type="checkbox"/>	<input type="checkbox"/>
• before-and-after-school care program.....	<input type="checkbox"/>	<input checked="" type="checkbox"/>

Safety and Discipline

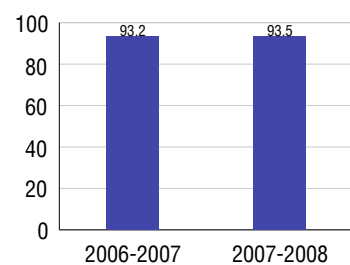
Safe schools are a top priority for parents, teachers, and communities. Your school safety and discipline record for the 2007-2008 school year is:

Type of Incident	Number of Incidents Reported	Percent of Total Incidents
Substance Abuse - Drugs		
Substance Abuse - Alcohol		
Substance Abuse - Tobacco		
Felony Assaults		
Fights		
Possession of Dangerous Weapons		
Other Violations Code of Conduct	3	100.0%

Student Attendance and School Calendar

2007-2008	Your School
Enrollment	215
Average Daily Attendance	201
Student Dropouts	N/A

Attendance Rate



Student Information Over Time

	2005-2006	2006-2007	2007-2008
Student Enrollment Stability	94.9%	94.7%	95.3%
Students Eligible for Free and Reduced Lunch	26.5 %	25.5 %	26.0 %

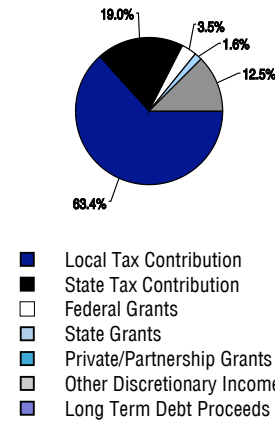
For more information and further details about this report, visit www.state.co.us/schools
 Colorado Department of Education, 201 East Colfax Ave. Denver, CO 80203
South Routt Elementary School
 2780/8120/E
 448 Main Street . Yampa, CO 80483 . 970-638-4558
 10/20/2008

DISTRICT TAXPAYER'S REPORT

Sources of School District Revenue 2007

Local Tax Contribution	\$3,430,819
State Tax Contribution	1,030,506
Federal Grants	186,699
State Grants	85,574
Private/Partnership Grants	0
Other Discretionary Income	677,565
Total District Operating Revenue	\$5,411,163
Long Term Debt Proceeds	0
Total District Revenue	\$5,411,163
Total District Operating Revenue Per Pupil =	\$13,279
Total District Revenue Per Pupil (Including Long Term Debt) =	\$13,279
District Per Pupil Operating Revenue =	\$7,571
State Average Per Pupil Operating Revenue =	\$6,080

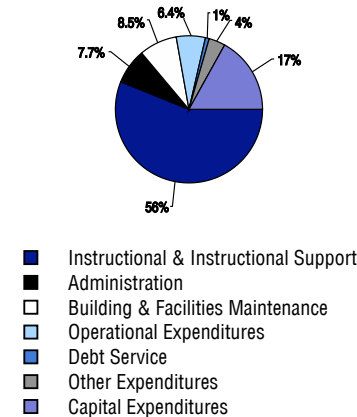
District Source of Funds 2007



District Use of Funds 2007

Instructional & Instructional Support	\$2,687,020
Administration	368,727
Building & Facilities Maintenance	409,010
Operational Expenditures	307,250
Debt Service	29,337
Other Expenditures	176,211
Total District Operating Expenditures	\$3,977,555
Capital Expenditures	815,606
Total District Use of Funds	\$4,793,161

District Use of Funds 2007



District Debt and Capital Construction & Equipment

Total Outstanding Bonded Debt	\$7,725,000
Average Annual Percentage Interest Rate on Debt	3.85%
Amount Raised from Most Recent Bond	\$8,950,000
Amount Spent on New Buildings During Last 2 Years	\$1,503,995

Accreditation

Accreditation is Colorado's primary accountability system, incorporating achievement levels, academic growth, achievement gaps, post-secondary readiness, improvement planning, and compliance. The state accredits districts and districts accredit individual schools.

District Accreditation Status for the 2007-2008 school year:

Voter Approved Funding Changes

Your community did /did not hold an election in November 2006

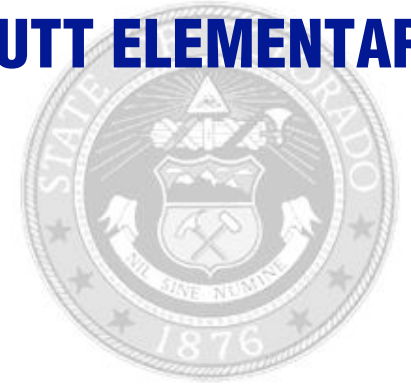
The following items have been approved by voters:

TABOR Override

Bond

Mill Levy Increase

SOUTH ROUNTT ELEMENTARY SCHOOL



SOUTH ROUNTT RE 3

www.southroutt.k12.co.us

School Accountability Report 2007-2008 School Year

School Performance Summary

Overall Academic Performance on State Assessments **Average**

Academic Growth of Students **Low**

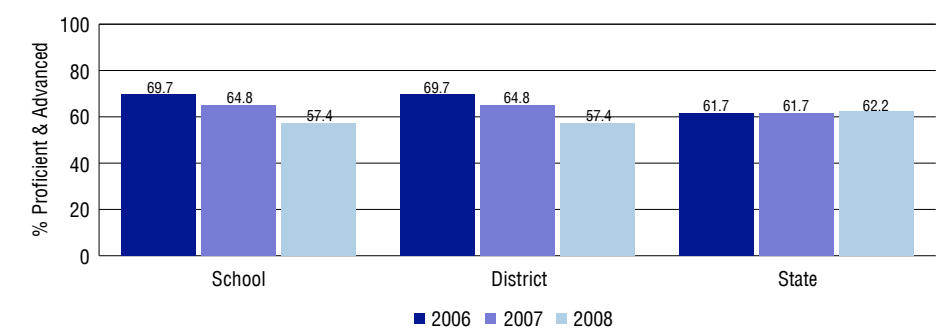
Overall Academic Performance on State Assessments

Each school in the State received a rating of "Excellent", "High", "Average", "Low", or "Unsatisfactory" for student academic performance based on 2007-2008 CSAP and COACT results. The rating is calculated using weighted percentages of each CSAP proficiency level for all content area and grade results for the school, as well as average COACT Reading, Writing, and Math Grade 11 results.

Academic Growth of Students

Each school in the State received a rating of "Low", "Typical", or "High" for student academic growth based on CSAP results. The calculation method is new for 2007-2008. The rating is calculated using student percentile scores matched over two years. More information about the Overall Academic Performance rating and Academic Growth of Students calculations can be found here: http://www.cde.state.co.us/cdeassess/SAR_Info.html.

Percent Proficient and Advanced for Elementary Grades for All Content Areas



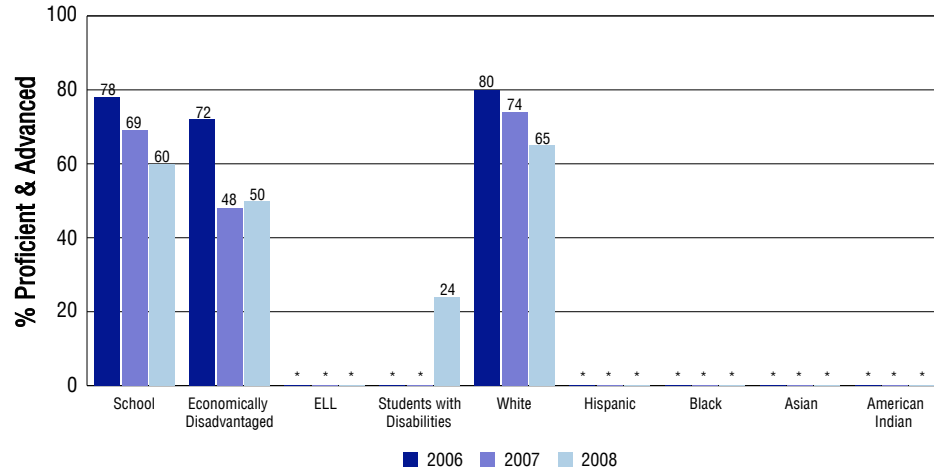
Student Test Scores Used For Calculating Overall Academic Performance

88.5%	Test Scores Counted
8.5%	Test Scores not used due to Language
2.9%	Test Scores not used due to New Student

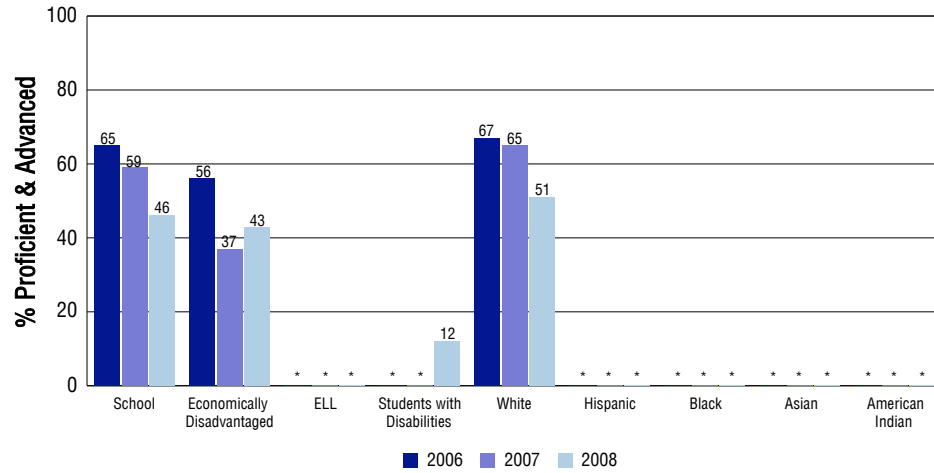
STUDENT PERFORMANCE

These graphs show the percent Proficient and Advanced trends over the past three years for Reading, Writing, and Math. Results are presented for the entire school for all reported grades as well as for different subgroups. Note: * indicates any group with less than 16 student results to be reported.

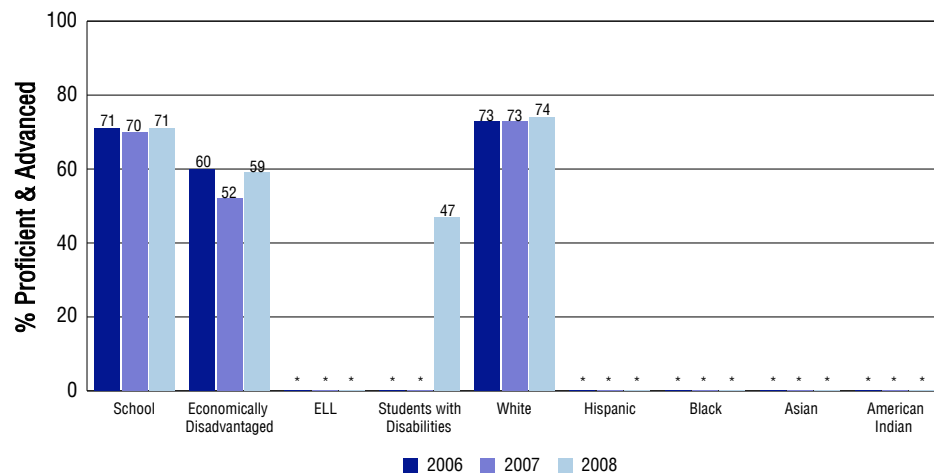
Reading



Writing



Math



SCHOOL INFORMATION

School Pride (as submitted by your district)

- Our mission is for all students to achieve a high level of proficiency in academics and the arts while providing a safe, positive school culture.
- An active Accountability Committee meets the first Thursday of each month with representation from faculty, para educators, parents and administration.
- The South Routt Elementary staff actively support the philosophy of Place Based Learning with many classroom supported field experiences.
- Our community becomes an important part of our school with their generous support of a variety of after school activities and events.

School Goals (as submitted by your district)

The South Routt School District's academic goals are to have each grade in each building reach at least 80% proficiency in reading and writing and at least 60% in math and science, as measured by CSAP, by the year 2010. Prior to that, each grade will show continuous growth in reading, writing, math and science until the above proficiencies are reached.

No Child Left Behind - Adequate Yearly Progress

Did your school make AYP in reading? Yes Math? Yes
 How many targets does your school have? 13 Met? 13

Based on this school's academic performance, your child may be eligible for one or more of the following; ask your school if your child qualifies for:

Extra academic instruction either before or after-school, or in the summer
 Mentoring

For additional information regarding Adequate Yearly Progress please visit
<http://www.cde.state.co.us/FedPrograms/ayp/index.asp>

How South Routt Elementary School Compares To Elementary Schools Within A 75-Mile Radius

School	Program Type	Academic Performance	Academic Growth
Soda Creek Elementary School(1)		High	Typical
Strawberry Park Elementary School(1)		Excellent	Typical
West Grand Elementary School(2)		Average	Low
Hayden Valley Elementary School(3)		High	Typical
Red Hill Elementary School(4)		Average	Typical
Eagle Valley Elementary School(4)		High	Typical
Gypsum Elementary School(4)		Average	Typical
Brush Creek Elementary School(4)		High	Typical
Eagle County Charter Academy(4)	Charter	Excellent	Typical
Edwards Elementary School(4)		Average	High

1 Located in Steamboat Springs RE-2 School District.
 2 Located in West Grand 1-Jt. School District.
 3 Located in Hayden RE-1 School District.
 4 Located in Eagle County RE 50 School District.

ABOUT OUR STAFF

School Employment

Each year, your district reports to the Colorado Department of Education on the number of adults who work in your school, as well as the type of work they do. Last year, your school employed:

	Your School		District	
	Full Time	Part Time	Full Time	Part Time
Teachers	17	0	31	4
Paraprofessionals	6	0	11	0
Administrators	1	0	5	1
Other Professionals	3	2	5	7
School Support	1	0	10	6
School Counselors	0	0	1	0
School Librarians	0	0	0	0
Total Staff	30		72	

Students per Teacher Ratio

	Student Enrollment	Students per Teacher
Grade 1	38	13.9
Grade 2	35	12.5
Grade 3	30	17.3
Grade 4	27	10
Grade 5	25	9.1
Grade 6	23	13.2

Professional Experience of Teachers

	Your School	District
Average years of teaching experience	11	9
Percent of teachers teaching in the subject in which they received their degree	N/A	N/A
Number of teachers with Masters or Doctoral degrees	8	12
Teachers with 3 years or more of teaching experience	12	26
Teachers with less than 3 years of teaching experience	5	9
Number of professional development days	9	9

Salaries

	Your School	District	State
Average Teacher Salary	\$36,991	\$37,995	\$47,494
Average Administrator Salary	\$68,900	\$63,260	\$80,444

Principal: Michael Young

Number of years as Principal at this school: 1 (New Hire 2007/2008)

Number of years as Principal at any school: 13