

SAFETY AND SCHOOL ENVIRONMENT

Non-CSAP Course Offerings

Your School Offers	does	does not
• art.....	<input checked="" type="checkbox"/>	<input type="checkbox"/>
• drama or theater.....	<input checked="" type="checkbox"/>	<input type="checkbox"/>
• music.....	<input checked="" type="checkbox"/>	<input type="checkbox"/>
• physical education.....	<input checked="" type="checkbox"/>	<input type="checkbox"/>
• opportunity for civic or community engagement.....	<input checked="" type="checkbox"/>	<input type="checkbox"/>
• internet safety program.....	<input checked="" type="checkbox"/>	<input type="checkbox"/>
• International Baccalaureate.....	<input type="checkbox"/>	<input checked="" type="checkbox"/>
• extracurricular activities.....	<input checked="" type="checkbox"/>	<input type="checkbox"/>
• athletics.....	<input checked="" type="checkbox"/>	<input type="checkbox"/>
• career and technical education.....	<input checked="" type="checkbox"/>	<input type="checkbox"/>
• advanced placement.....	<input checked="" type="checkbox"/>	<input type="checkbox"/>
• honors.....	<input type="checkbox"/>	<input checked="" type="checkbox"/>

Safety and Discipline

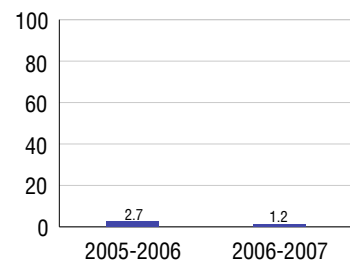
Safe schools are a top priority for parents, teachers, and communities. Your school safety and discipline record for the 2007-2008 school year is:

Type of Incident	Number of Incidents Reported	Percent of Total Incidents
Substance Abuse - Drugs	3	12.5%
Substance Abuse - Alcohol	9	37.5%
Substance Abuse - Tobacco		
Felony Assaults		
Fights		
Possession of Dangerous Weapons		
Other Violations Code of Conduct	12	50.0%

Student Attendance and School Calendar

2007-2008	Your School
Enrollment	677
Average Daily Attendance	633
Student Dropouts	1.2%

Dropout Rate



Student Information Over Time

	2005-2006	2006-2007	2007-2008
Student Enrollment Stability	97.3%	98.0%	96.9%
Students Eligible for Free and Reduced Lunch	3.9 %	2.7 %	3.2 %

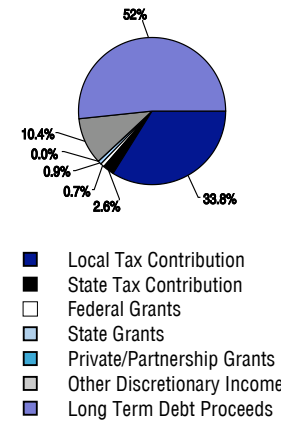
For more information and further details about this report, visit www.state.co.us/schools
 Colorado Department of Education, 201 East Colfax Ave. Denver, CO 80203
Steamboat Springs High School
 2770/8212/H
 45 East Maple Street . Steamboat Springs, CO 80477 . 970-879-1562
 10/20/2008

DISTRICT TAXPAYER'S REPORT

Sources of School District Revenue 2007

Local Tax Contribution	\$20,280,526
State Tax Contribution	1,574,251
Federal Grants	412,685
State Grants	563,760
Private/Partnership Grants	13,799
Other Discretionary Income	6,243,394
Total District Operating Revenue	\$29,088,415
Long Term Debt Proceeds	30,957,073
Total District Revenue	\$60,045,488
Total District Operating Revenue Per Pupil =	\$14,643
Total District Revenue Per Pupil (Including Long Term Debt) =	\$30,227
District Per Pupil Operating Revenue =	\$6,154
State Average Per Pupil Operating Revenue =	\$6,080

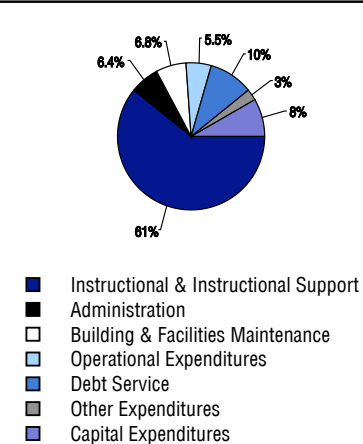
District Source of Funds 2007



District Use of Funds 2007

Instructional & Instructional Support	\$17,015,515
Administration	1,803,320
Building & Facilities Maintenance	1,914,232
Operational Expenditures	1,539,404
Debt Service	2,712,678
Other Expenditures	729,847
Total District Operating Expenditures	\$25,714,996
Capital Expenditures	2,307,985
Total District Use of Funds	\$28,022,981

District Use of Funds 2007



District Debt and Capital Construction & Equipment

Total Outstanding Bonded Debt	\$46,480,000
Average Annual Percentage Interest Rate on Debt	3.98%
Amount Raised from Most Recent Bond	\$29,685,000
Amount Spent on New Buildings During Last 2 Years	\$1,517,437

Accreditation

Accreditation is Colorado's primary accountability system, incorporating achievement levels, academic growth, achievement gaps, post-secondary readiness, improvement planning, and compliance. The state accredits districts and districts accredit individual schools.

District Accreditation Status for the 2007-2008 school year:

Voter Approved Funding Changes

Your community did /did not hold an election in November 2006

The following items have been approved by voters:

<input type="checkbox"/> TABOR Override	<input checked="" type="checkbox"/> Bond \$29,685,000	<input checked="" type="checkbox"/> Mill Levy Increase \$600,000
---	---	--

STEAMBOAT SPRINGS HIGH SCHOOL



STEAMBOAT SPRINGS RE-2

www.sssd.k12.co.us

School Accountability Report 2007-2008 School Year

School Performance Summary

Overall Academic Performance on State Assessments **Excellent**

Academic Growth of Students **Typical**

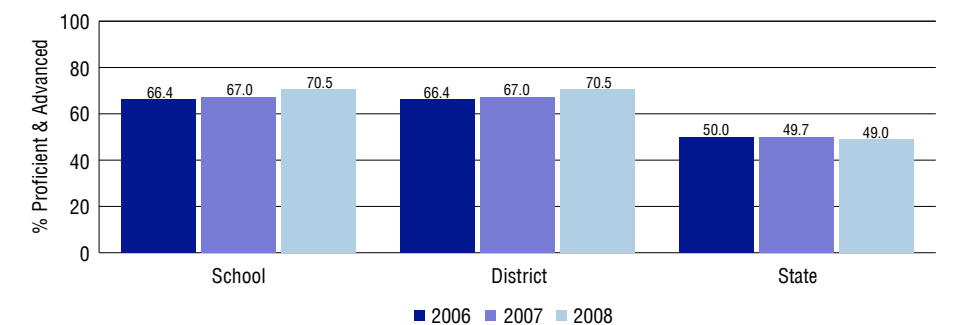
Overall Academic Performance on State Assessments

Each school in the State received a rating of "Excellent", "High", "Average", "Low", or "Unsatisfactory" for student academic performance based on 2007-2008 CSAP and COACT results. The rating is calculated using weighted percentages of each CSAP proficiency level for all content area and grade results for the school, as well as average COACT Reading, Writing, and Math Grade 11 results.

Academic Growth of Students

Each school in the State received a rating of "Low", "Typical", or "High" for student academic growth based on CSAP results. The calculation method is new for 2007-2008. The rating is calculated using student percentile scores matched over two years. More information about the Overall Academic Performance rating and Academic Growth of Students calculations can be found here: http://www.cde.state.co.us/cdeassess/SAR_Info.html.

Percent Proficient and Advanced for High Grades for All Content Areas



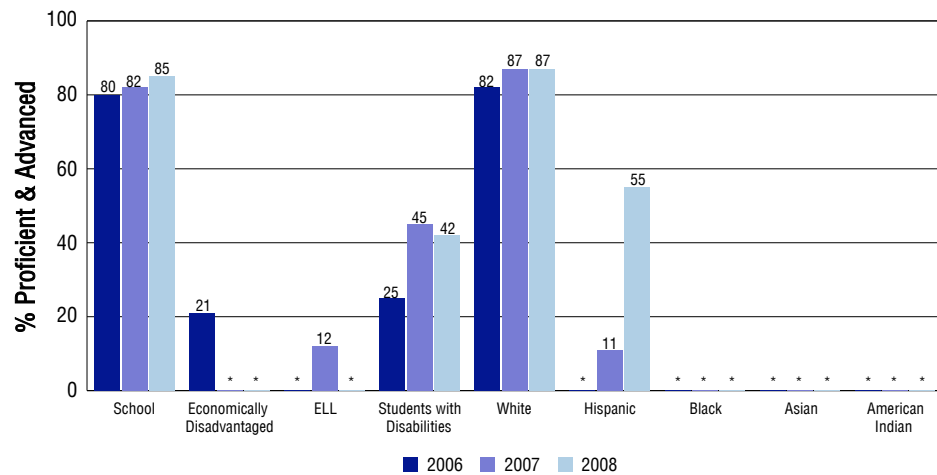
Student Test Scores Used For Calculating Overall Academic Performance

98.2%	Test Scores Counted
0.3%	Test Scores not used due to Language
1.5%	Test Scores not used due to New Student

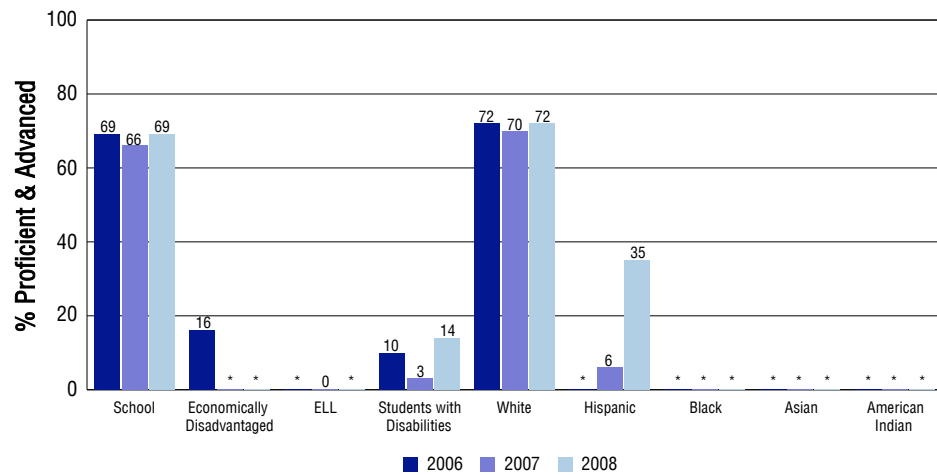
STUDENT PERFORMANCE

These graphs show the percent Proficient and Advanced trends over the past three years for Reading, Writing, and Math. Results are presented for the entire school for all reported grades as well as for different subgroups. Note: * indicates any group with less than 16 student results to be reported.

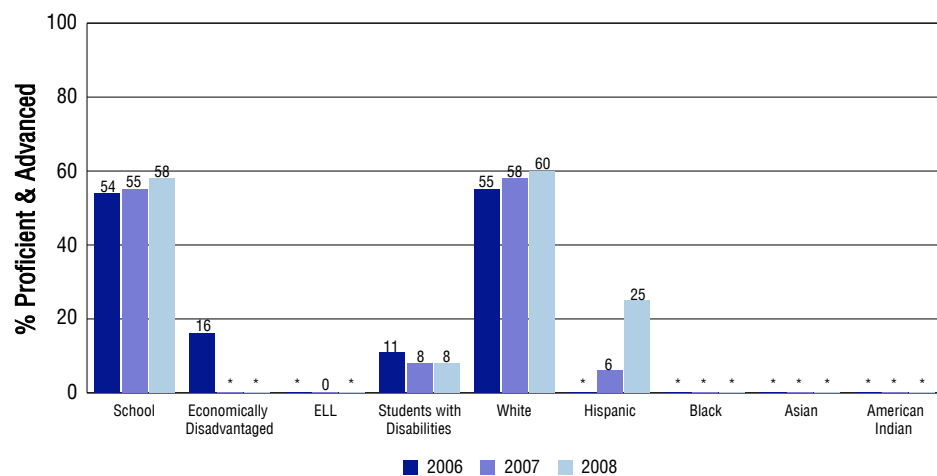
Reading



Writing



Math



SCHOOL INFORMATION

School Pride (as submitted by your district)

- 70% of 2007 graduates attend a 4year institution, including 8 who qualified for Boettcher, 8 Byrd Scholarships and 1 Daniels Fund Scholarship recipient.
- Over 85% participate in at least one sport or activity. Thousands of community service hours have been logged through organizations such as NHS, Interact and EPYC
- We offer a high number of AP courses. 112 students took 240 AP exams in 9 areas; 62% scored 3 or higher: 8 APscholars, 4 APw honor and 1 APscholar w distinction.
- 25 students enrolled in work based learning; 33 students in internships or mentorship and 29 students dual enrolled via PostSecondary Enrollment Opportunity Act

School Goals (as submitted by your district)

1. Common assessments will be written, administered, analyzed and used to make instructional decisions and track progress for 2006, 2007, and 2008. 2. Students will discuss the neurodevelopmental constructs as identified by Levine's "Schools Attuned" and how these relate to personal learning strengths and necessary adaptations. 3. Staff will implement "Understanding By Design" and "Schools Attuned Model" through a "Professional Learning Community" in order for the goals of Academic Achievement and Social Competence to be realized. 4. Staff will implement communications system strategies that will result in improved communication with all stakeholders.

No Child Left Behind - Adequate Yearly Progress

Did your school make AYP in reading?	Yes	Math?	No
Did your school make the graduation rate targets?	Yes		
How many targets does your school have?	14	Met?	13

Based on this school's academic performance, your child may be eligible for one or more of the following; ask your school if your child qualifies for:

Extra academic instruction either before or after-school, or in the summer
Mentoring

For additional information regarding Adequate Yearly Progress please visit
<http://www.cde.state.co.us/FedPrograms/ayp/index.asp>

How Steamboat Springs High School Compares To High Schools Within A 75-Mile Radius

School	Program Type	Academic Performance	Academic Growth
Yampa Valley High School(1)	Alternative	Low	No Rating
Soroco High School(2)		High	High
Hayden High School(3)		Average	Typical
North Park Junior-Senior High School(4)		High	Typical
West Grand High School(5)		High	High
Moffat County High School(6)		Average	Typical
Middle Park High School(7)		High	Low
Eagle Valley High School(8)		High	Low
Red Canyon High School(8)	Alternative	Low	No Rating
Meeker High School(9)		High	Typical

1 Located in Northwest Colo Boces School District.
2 Located in South Routt RE 3 School District.
3 Located in Hayden RE-1 School District.
4 Located in North Park R-1 School District.
5 Located in West Grand 1-Jt. School District.

6 Located in Moffat County Re:No 1 School District.
7 Located in East Grand 2 School District.
8 Located in Eagle County RE 50 School District.
9 Located in Meeker Re1 School District.

ABOUT OUR STAFF

School Employment

Each year, your district reports to the Colorado Department of Education on the number of adults who work in your school, as well as the type of work they do. Last year, your school employed:

	Your School		District	
	Full Time	Part Time	Full Time	Part Time
Teachers	38	17	122	41
Paraprofessionals	7	0	32	8
Administrators	2	1	15	2
Other Professionals	1	1	8	2
School Support	14	1	48	13
School Counselors	3	1	6	3
School Librarians	1	0	4	0
Total Staff	86		299	

Students per Teacher Ratio

	Student Enrollment	Students per Teacher
Grade 9	183	15.9
Grade 10	167	14.5
Grade 11	141	11.1
Grade 12	186	16.7

Professional Experience of Teachers

	Your School	District
Average years of teaching experience	10	12
Percent of teachers teaching in the subject in which they received their degree	49%	52%
Number of teachers with Masters or Doctoral degrees	39	106
Teachers with 3 years or more of teaching experience	40	133
Teachers with less than 3 years of teaching experience	15	30
Number of professional development days	5	5

Salaries

	Your School	District	State
Average Teacher Salary	\$51,858	\$51,530	\$47,494
Average Administrator Salary	\$91,635	\$76,491	\$80,444

Principal: Kevin Knezevich

Number of years as Principal at this school: 4

Number of years as Principal at any school: 4