

# SAFETY AND SCHOOL ENVIRONMENT

## Non-CSAP Course Offerings

Your School Offers	does	does not
• art.....	<input checked="" type="checkbox"/>	<input type="checkbox"/>
• drama or theater.....	<input checked="" type="checkbox"/>	<input type="checkbox"/>
• music.....	<input checked="" type="checkbox"/>	<input type="checkbox"/>
• physical education.....	<input checked="" type="checkbox"/>	<input type="checkbox"/>
• opportunity for civic or community engagement.....	<input checked="" type="checkbox"/>	<input type="checkbox"/>
• internet safety program.....	<input checked="" type="checkbox"/>	<input type="checkbox"/>
• International Baccalaureate.....	<input type="checkbox"/>	<input checked="" type="checkbox"/>
• extracurricular activities.....	<input checked="" type="checkbox"/>	<input type="checkbox"/>
• athletics.....	<input checked="" type="checkbox"/>	<input type="checkbox"/>
• career and technical education.....	<input checked="" type="checkbox"/>	<input type="checkbox"/>
• honors.....	<input checked="" type="checkbox"/>	<input type="checkbox"/>

## Safety and Discipline

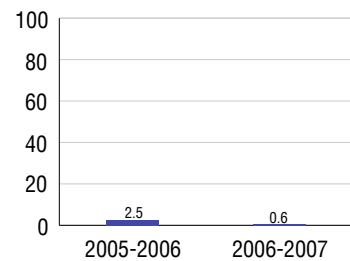
Safe schools are a top priority for parents, teachers, and communities. Your school safety and discipline record for the 2007-2008 school year is:

Type of Incident	Number of Incidents Reported	Percent of Total Incidents
Substance Abuse - Drugs	2	1.7%
Substance Abuse - Alcohol		
Substance Abuse - Tobacco		
Felony Assaults		
Fights	9	7.6%
Possession of Dangerous Weapons		
Other Violations Code of Conduct	107	90.7%

## Student Attendance and School Calendar

2007-2008	Your School
Enrollment	462
Average Daily Attendance	426
Student Dropouts	0.6%

## Dropout Rate



## Student Information Over Time

	2005-2006	2006-2007	2007-2008
Student Enrollment Stability	97.4%	96.7%	98.1%
Students Eligible for Free and Reduced Lunch	8.3 %	8.2 %	7.6 %

For more information and further details about this report, visit [www.state.co.us/schools](http://www.state.co.us/schools)  
 Colorado Department of Education, 201 East Colfax Ave. Denver, CO 80203  
**Steamboat Springs Middle School**  
 2770/8210/M  
 39610 Amethyst Drive . Steamboat Springs, CO 80487 . 970-879-1058  
 10/20/2008

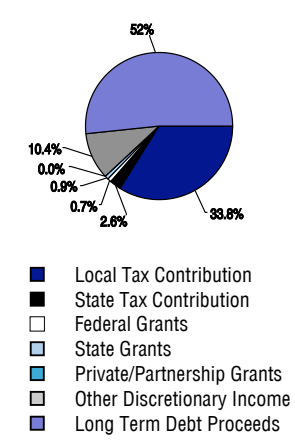
# DISTRICT TAXPAYER'S REPORT

Sources of School District Revenue	2007
Local Tax Contribution	\$20,280,526
State Tax Contribution	1,574,251
Federal Grants	412,685
State Grants	563,760
Private/Partnership Grants	13,799
Other Discretionary Income	6,243,394
<b>Total District Operating Revenue</b>	<b>\$29,088,415</b>
Long Term Debt Proceeds	30,957,073
<b>Total District Revenue</b>	<b>\$60,045,488</b>
<b>Total District Operating Revenue Per Pupil =</b>	<b>\$14,643</b>
<b>Total District Revenue Per Pupil (Including Long Term Debt) =</b>	<b>\$30,227</b>
<b>District Per Pupil Operating Revenue =</b>	<b>\$6,154</b>
<b>State Average Per Pupil Operating Revenue =</b>	<b>\$6,080</b>

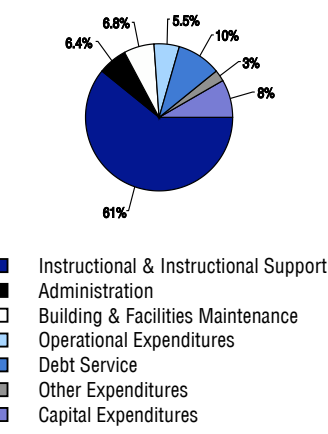
  

District Use of Funds	2007
Instructional & Instructional Support	\$17,015,515
Administration	1,803,320
Building & Facilities Maintenance	1,914,232
Operational Expenditures	1,539,404
Debt Service	2,712,678
Other Expenditures	729,847
<b>Total District Operating Expenditures</b>	<b>\$25,714,996</b>
Capital Expenditures	2,307,985
<b>Total District Use of Funds</b>	<b>\$28,022,981</b>

## District Source of Funds 2007



## District Use of Funds 2007



## District Debt and Capital Construction & Equipment

Total Outstanding Bonded Debt	\$46,480,000
Average Annual Percentage Interest Rate on Debt	3.98%
Amount Raised from Most Recent Bond	\$29,685,000
Amount Spent on New Buildings During Last 2 Years	\$1,517,437

## Accreditation

Accreditation is Colorado's primary accountability system, incorporating achievement levels, academic growth, achievement gaps, post-secondary readiness, improvement planning, and compliance. The state accredits districts and districts accredit individual schools.

District Accreditation Status for the 2007-2008 school year:

## Voter Approved Funding Changes

Your community did  /did not  hold an election in November 2006

The following items have been approved by voters:

<input type="checkbox"/> TABOR Override	<input checked="" type="checkbox"/> Bond \$29,685,000	<input checked="" type="checkbox"/> Mill Levy Increase \$600,000
-----------------------------------------	-------------------------------------------------------	------------------------------------------------------------------

# STEAMBOAT SPRINGS MIDDLE SCHOOL



## STEAMBOAT SPRINGS RE-2

[www.sssd.k12.co.us](http://www.sssd.k12.co.us)

## School Accountability Report 2007-2008 School Year

### School Performance Summary

**Overall Academic Performance on State Assessments** Excellent

**Academic Growth of Students** Typical

Winner of a John Irwin School of Excellence for the 2007-2008 School Year

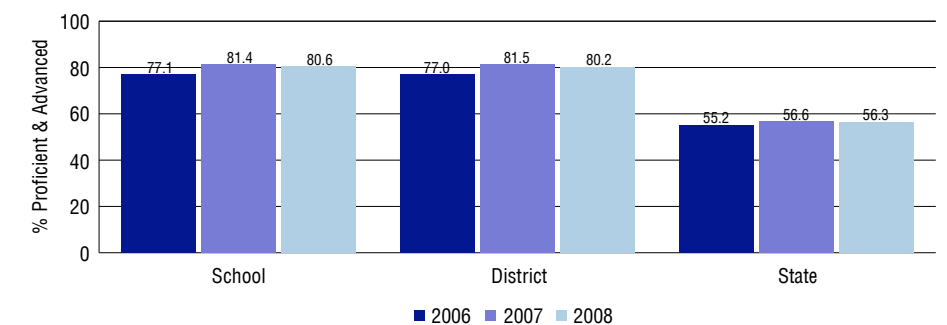
#### Overall Academic Performance on State Assessments

Each school in the State received a rating of "Excellent", "High", "Average", "Low", or "Unsatisfactory" for student academic performance based on 2007-2008 CSAP and COACT results. The rating is calculated using weighted percentages of each CSAP proficiency level for all content area and grade results for the school, as well as average COACT Reading, Writing, and Math Grade 11 results.

#### Academic Growth of Students

Each school in the State received a rating of "Low", "Typical", or "High" for student academic growth based on CSAP results. The calculation method is new for 2007-2008. The rating is calculated using student percentile scores matched over two years. More information about the Overall Academic Performance rating and Academic Growth of Students calculations can be found here: [http://www.cde.state.co.us/cdeassess/SAR\\_Info.html](http://www.cde.state.co.us/cdeassess/SAR_Info.html).

## Percent Proficient and Advanced for Middle Grades for All Content Areas



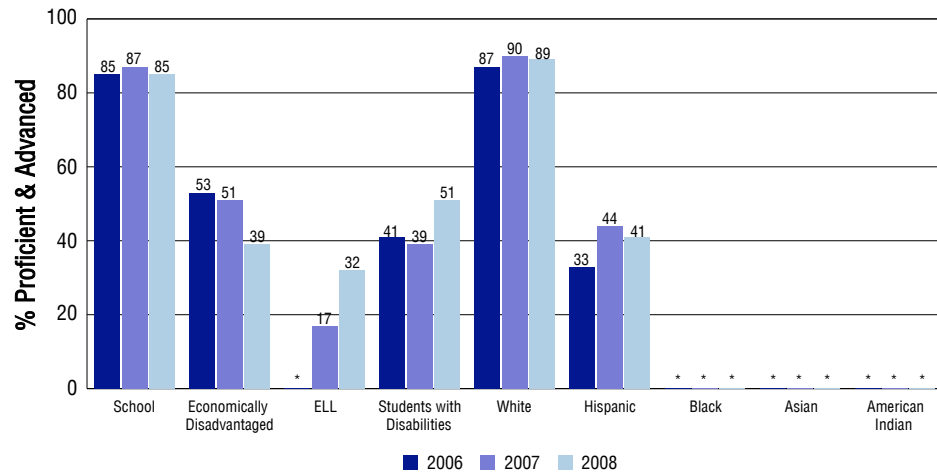
## Student Test Scores Used For Calculating Overall Academic Performance

95.5%	Test Scores Counted
2.2%	Test Scores not used due to Language
2.2%	Test Scores not used due to New Student

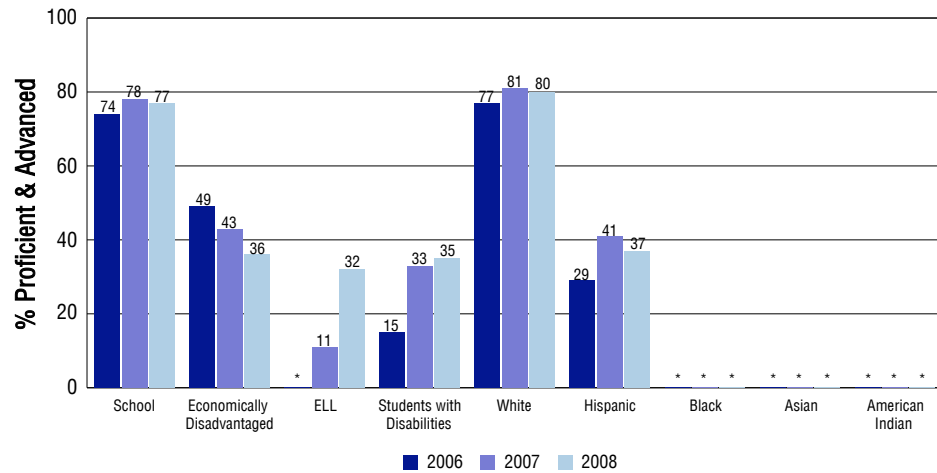
## STUDENT PERFORMANCE

These graphs show the percent Proficient and Advanced trends over the past three years for Reading, Writing, and Math. Results are presented for the entire school for all reported grades as well as for different subgroups. Note: \* indicates any group with less than 16 student results to be reported.

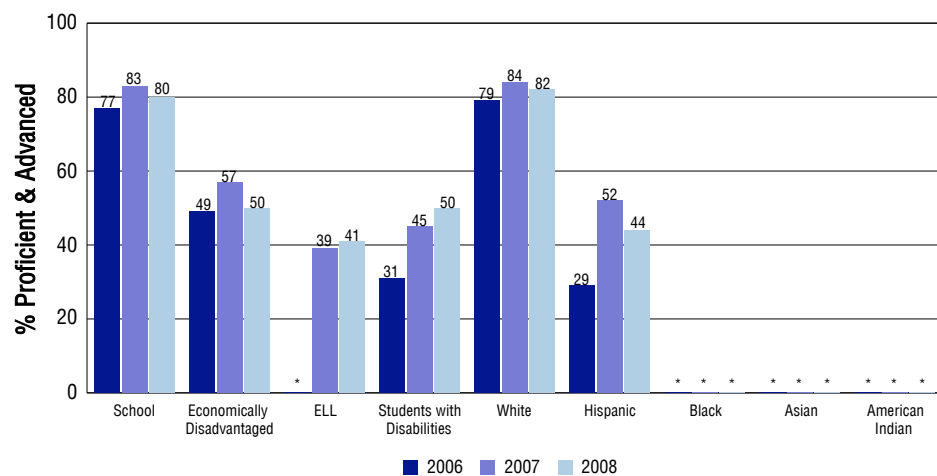
### Reading



### Writing



### Math



## SCHOOL INFORMATION

### School Pride (as submitted by your district)

- Our school is a recognized CDE Positive Behavior Support school.
- Our school is utilizing the Response to Intervention model and has implemented a structured intervention time each day for 6th grade.
- Our school has been awarded the designation of "School of Excellence" in 2005, 2006, 2007. In 2007 our school was named a "John Irwin School of Excellence."
- This year our school is producing a musical production that involves approximately 150 students and the majority of our staff.

### School Goals (as submitted by your district)

1.Math:Shift focus to computation while cont. to achieve in number sense 2.Reading: Maintain prof and adv readers while moving more students up a level 3.Writing: Focus more on grammar in order to maintain our ext writing scores 4.Science:Realign curriculum to revised state standards and administer common assessments based on realignment 5.ELL: 80% of students who are continuous in the district will increase scores by at least one level on CELA test 6.GT: Students will be systematically identified and have an ALP 7.Collect baseline data over the next 3 yrs to assess student perception of school climate 8. Cont. staff education and work on red and yellow zone interventions

### No Child Left Behind - Adequate Yearly Progress

Did your school make AYP in reading? Yes Math? Yes  
How many targets does your school have? 20 Met? 20

Based on this school's academic performance, your child may be eligible for one or more of the following; ask your school if your child qualifies for:

Extra academic instruction either before or after-school, or in the summer  
Mentoring

For additional information regarding Adequate Yearly Progress please visit  
<http://www.cde.state.co.us/FedPrograms/ayp/index.asp>

### How Steamboat Springs Middle School Compares To Middle Schools Within A 75-Mile Radius

School	Program Type	Academic Performance	Academic Growth
Soroco Middle School(1)		High	Low
North Routt Charter School	Charter	High	No Rating
Hayden Middle School(2)		Average	Typical
North Park Junior-Senior High School(3)		High	Typical
West Grand Middle School(4)		Average	Low
Craig Middle School School(5)		Average	Low
Harry L Mc Ginnis Middle School(6)		Average	Typical
Indian Peaks Charter School(7)	Charter	High	No Rating
East Grand Middle School(7)		High	Typical
Gypsum Creek Middle School(8)		High	High

1 Located in South Routt RE 3 School District.  
2 Located in Hayden RE-1 School District.  
3 Located in North Park R-1 School District.  
4 Located in West Grand 1-Jt. School District.  
5 Located in Moffat County Re:No 1 School District.

6 Located in Buena Vista R-31 School District.  
7 Located in East Grand 2 School District.  
8 Located in Eagle County RE 50 School District.

## ABOUT OUR STAFF

### School Employment

Each year, your district reports to the Colorado Department of Education on the number of adults who work in your school, as well as the type of work they do. Last year, your school employed:

	Your School		District	
	Full Time	Part Time	Full Time	Part Time
Teachers	23	17	122	41
Paraprofessionals	5	2	32	8
Administrators	2	1	15	2
Other Professionals	2	1	8	2
School Support	5	3	48	13
School Counselors	2	1	6	3
School Librarians	1	0	4	0
<b>Total Staff</b>	63		299	

### Students per Teacher Ratio

	Student Enrollment	Students per Teacher
Grade 6	163	16.9
Grade 7	154	16.8
Grade 8	145	14.5

### Professional Experience of Teachers

	Your School	District
Average years of teaching experience	13	12
Percent of teachers teaching in the subject in which they received their degree	61%	52%
Number of teachers with Masters or Doctoral degrees	27	106
Teachers with 3 years or more of teaching experience	36	133
Teachers with less than 3 years of teaching experience	4	30
Number of professional development days	5	5

### Salaries

	Your School	District	State
Average Teacher Salary	\$57,567	\$51,530	\$47,494
Average Administrator Salary	\$62,007	\$76,491	\$80,444

Principal: Timothy Bishop

Number of years as Principal at this school: 8

Number of years as Principal at any school: 8