

SAFETY AND SCHOOL ENVIRONMENT

Non-CSAP Course Offerings

Your School Offers	does	does not
• art.....	<input checked="" type="checkbox"/>	<input type="checkbox"/>
• drama or theater.....	<input type="checkbox"/>	<input checked="" type="checkbox"/>
• music.....	<input checked="" type="checkbox"/>	<input type="checkbox"/>
• physical education.....	<input checked="" type="checkbox"/>	<input type="checkbox"/>
• opportunity for civic or community engagement.....	<input type="checkbox"/>	<input checked="" type="checkbox"/>
• internet safety program.....	<input type="checkbox"/>	<input checked="" type="checkbox"/>
• International Baccalaureate.....	<input type="checkbox"/>	<input checked="" type="checkbox"/>
• extracurricular activities.....	<input checked="" type="checkbox"/>	<input type="checkbox"/>
• athletics.....	<input type="checkbox"/>	<input checked="" type="checkbox"/>
• preschool program.....	<input type="checkbox"/>	<input checked="" type="checkbox"/>
• full-day kindergarten program.....	<input type="checkbox"/>	<input checked="" type="checkbox"/>
• before-and-after-school care program.....	<input type="checkbox"/>	<input checked="" type="checkbox"/>

Safety and Discipline

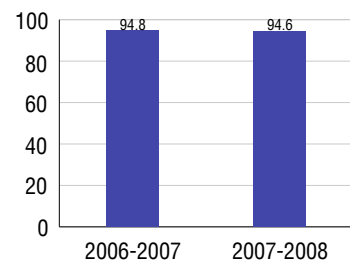
Safe schools are a top priority for parents, teachers, and communities. Your school safety and discipline record for the 2007-2008 school year is:

Type of Incident	Number of Incidents Reported	Percent of Total Incidents
Substance Abuse - Drugs		
Substance Abuse - Alcohol		
Substance Abuse - Tobacco		
Felony Assaults		
Fights		
Possession of Dangerous Weapons		
Other Violations Code of Conduct	2	100.0%

Student Attendance and School Calendar

2007-2008	Your School
Enrollment	492
Average Daily Attendance	465
Student Dropouts	N/A

Attendance Rate



Student Information Over Time

	2005-2006	2006-2007	2007-2008
Student Enrollment Stability	97.6%	99.6%	98.0%
Students Eligible for Free and Reduced Lunch	8.2 %	9.8 %	8.3 %

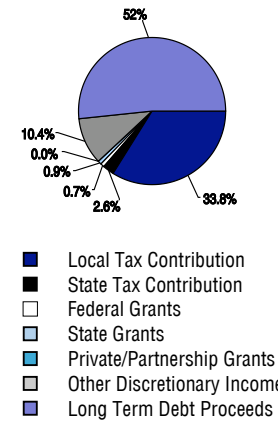
For more information and further details about this report, visit www.state.co.us/schools
 Colorado Department of Education, 201 East Colfax Ave. Denver, CO 80203
Strawberry Park Elementary School
 2770/8358/E
 39620 Amethyst Drive . Steamboat Springs, CO 80487 . 970-879-7550
 10/20/2008

DISTRICT TAXPAYER'S REPORT

Sources of School District Revenue 2007

Local Tax Contribution	\$20,280,526
State Tax Contribution	1,574,251
Federal Grants	412,685
State Grants	563,760
Private/Partnership Grants	13,799
Other Discretionary Income	6,243,394
Total District Operating Revenue	\$29,088,415
Long Term Debt Proceeds	30,957,073
Total District Revenue	\$60,045,488
Total District Operating Revenue Per Pupil =	\$14,643
Total District Revenue Per Pupil (Including Long Term Debt) =	\$30,227
District Per Pupil Operating Revenue =	\$6,154
State Average Per Pupil Operating Revenue =	\$6,080

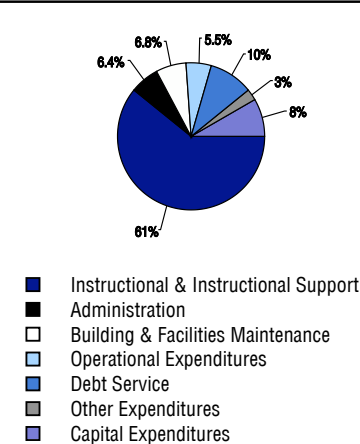
District Source of Funds 2007



District Use of Funds 2007

Instructional & Instructional Support	\$17,015,515
Administration	1,803,320
Building & Facilities Maintenance	1,914,232
Operational Expenditures	1,539,404
Debt Service	2,712,678
Other Expenditures	729,847
Total District Operating Expenditures	\$25,714,996
Capital Expenditures	2,307,985
Total District Use of Funds	\$28,022,981

District Use of Funds 2007



District Debt and Capital Construction & Equipment

Total Outstanding Bonded Debt	\$46,480,000
Average Annual Percentage Interest Rate on Debt	3.98%
Amount Raised from Most Recent Bond	\$29,685,000
Amount Spent on New Buildings During Last 2 Years	\$1,517,437

Accreditation

Accreditation is Colorado's primary accountability system, incorporating achievement levels, academic growth, achievement gaps, post-secondary readiness, improvement planning, and compliance. The state accredits districts and districts accredit individual schools.

District Accreditation Status for the 2007-2008 school year:

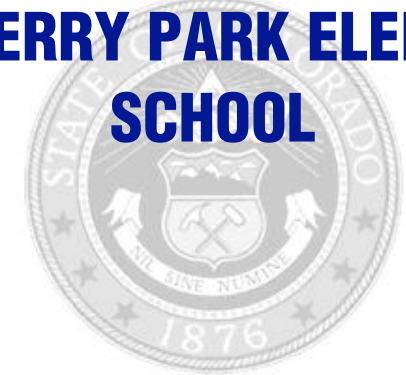
Voter Approved Funding Changes

Your community did /did not hold an election in November 2006

The following items have been approved by voters:

<input type="checkbox"/> TABOR Override	<input checked="" type="checkbox"/> Bond \$29,685,000	<input checked="" type="checkbox"/> Mill Levy Increase \$600,000
---	---	--

STRAWBERRY PARK ELEMENTARY SCHOOL



STEAMBOAT SPRINGS RE-2

www.sssd.k12.co.us

School Accountability Report 2007-2008 School Year

School Performance Summary

Overall Academic Performance on State Assessments	Excellent
---	-----------

Academic Growth of Students

Academic Growth of Students	Typical
-----------------------------	---------

Winner of a John Irwin School of Excellence for the 2007-2008 School Year

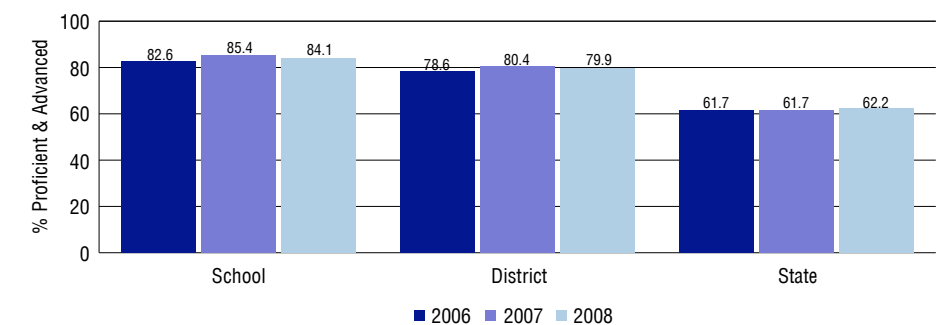
Overall Academic Performance on State Assessments

Each school in the State received a rating of "Excellent", "High", "Average", "Low", or "Unsatisfactory" for student academic performance based on 2007-2008 CSAP and COACT results. The rating is calculated using weighted percentages of each CSAP proficiency level for all content area and grade results for the school, as well as average COACT Reading, Writing, and Math Grade 11 results.

Academic Growth of Students

Each school in the State received a rating of "Low", "Typical", or "High" for student academic growth based on CSAP results. The calculation method is new for 2007-2008. The rating is calculated using student percentile scores matched over two years. More information about the Overall Academic Performance rating and Academic Growth of Students calculations can be found here: http://www.cde.state.co.us/cdeassess/SAR_Info.html.

Percent Proficient and Advanced for Elementary Grades for All Content Areas



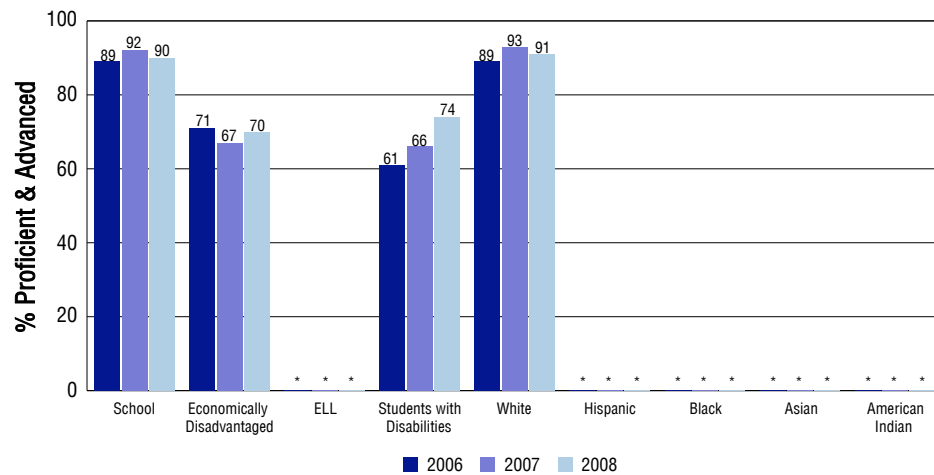
Student Test Scores Used For Calculating Overall Academic Performance

95.9%	Test Scores Counted
2.5%	Test Scores not used due to Language
1.6%	Test Scores not used due to New Student

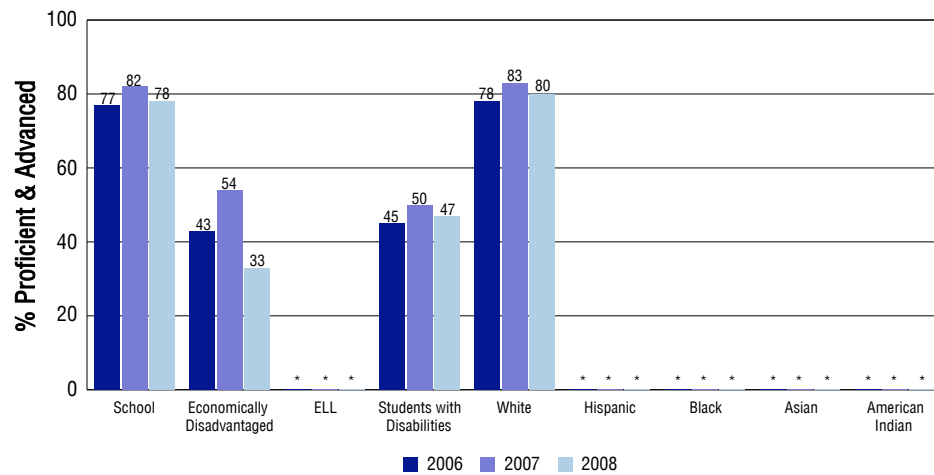
STUDENT PERFORMANCE

These graphs show the percent Proficient and Advanced trends over the past three years for Reading, Writing, and Math. Results are presented for the entire school for all reported grades as well as for different subgroups. Note: * indicates any group with less than 16 student results to be reported.

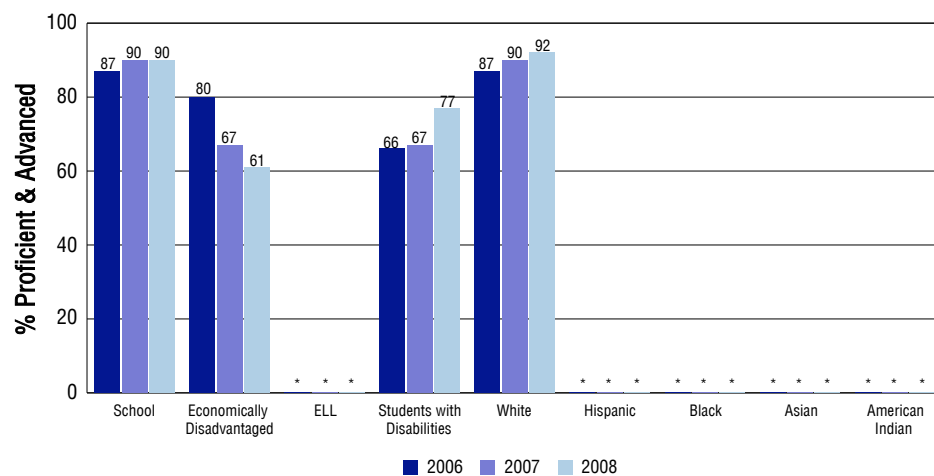
Reading



Writing



Math



SCHOOL INFORMATION

School Pride (as submitted by your district)

- We've been designated as a John Irwin School of Excellence since 2001 inception of the award ;received "excellent" rating for academics for 6 consecutive years.
- We have been designated as a Positive Behavior Support school by the state.
- Community has supported us with \$.05 tax over 10 years,enabling smaller class sizes;advanced technology;a Spanish,GT,and ELL program,and a renovated facility.
- Our Parents and Community have contributed over \$100,000 to support classroom teachers' "wishlists" and the building of a barrier free playground.

School Goals (as submitted by your district)

- 1.Increase Advanced math CSAP scores in grades 3 to 5 to a combined average of 59% by 2010.
2. Increase Advanced CSAP reading scores in all grade levels to over 20% by 2009.
3. Decrease discrepancy in Advanced CSAP reading scores between boys and girls by 20% by 2009.
4. Decrease discrepancy in Proficient and Advanced Reading CSAP scores between girls and boys by 20% by 2009.
5. Research comprehensive and research based writing techniques in order to align instructional practices between and among grade levels in order to improve CSAP Writing Proficient and Advanced composite average to 80% by 2009.

No Child Left Behind - Adequate Yearly Progress

Did your school make AYP in reading? Yes Math? Yes
 How many targets does your school have? 17 Met? 17

Based on this school's academic performance, your child may be eligible for one or more of the following; ask your school if your child qualifies for:

Extra academic instruction either before or after-school, or in the summer
 Mentoring

For additional information regarding Adequate Yearly Progress please visit
<http://www.cde.state.co.us/FedPrograms/ayp/index.asp>

How Strawberry Park Elementary School Compares To Elementary Schools Within A 75-Mile Radius

School	Program Type	Academic Performance	Academic Growth
Soda Creek Elementary School		High	Typical
North Routt Charter School	Charter	Average	No Rating
Hayden Valley Elementary School(1)		High	Typical
South Routt Elementary School(2)		Average	Low
Walden Elementary School(3)		Average	High
East Elementary School(4)		Average	Typical
West Grand Elementary School(5)		Average	Low
Craig Intermediate School(4)		Average	Typical
Sunset Elementary School(4)		Average	Typical
Ridgeview Elementary School(4)		Average	Low

- 1 Located in Hayden RE-1 School District.
- 2 Located in South Routt RE 3 School District.
- 3 Located in North Park R-1 School District.
- 4 Located in Moffat County Re:No 1 School District.
- 5 Located in West Grand 1-Jt. School District.

ABOUT OUR STAFF

School Employment

Each year, your district reports to the Colorado Department of Education on the number of adults who work in your school, as well as the type of work they do. Last year, your school employed:

	Your School		District	
	Full Time	Part Time	Full Time	Part Time
Teachers	32	9	122	41
Paraprofessionals	10	6	32	8
Administrators	1	0	15	2
Other Professionals	2	0	8	2
School Support	4	2	48	13
School Counselors	1	0	6	3
School Librarians	1	0	4	0
Total Staff	66		299	

Students per Teacher Ratio

	Student Enrollment	Students per Teacher
Grade 1	73	9.1
Grade 2	86	15.7
Grade 3	90	13.5
Grade 4	95	18.1
Grade 5	88	16.9

Professional Experience of Teachers

	Your School	District
Average years of teaching experience	13	12
Percent of teachers teaching in the subject in which they received their degree	N/A	N/A
Number of teachers with Masters or Doctoral degrees	24	106
Teachers with 3 years or more of teaching experience	33	133
Teachers with less than 3 years of teaching experience	8	30
Number of professional development days	5	5

Salaries

	Your School	District	State
Average Teacher Salary	\$47,752	\$51,530	\$47,494
Average Administrator Salary	\$87,500	\$76,491	\$80,444

Principal: Brenda Barr

Number of years as Principal at this school: 1 (New Hire 2007/2008)

Number of years as Principal at any school: 1